



SERVICE MANUAL RATIO 804 PLUS

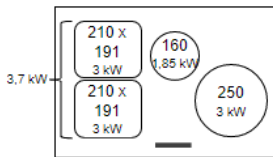
SM2300025

SERVICE MANUAL RATIO 804 PLUS

Product presentation / presentazione prodotto

RATIO 804 PLUS

PRF018391



Specs

DIMENSION (mm)	78 x 52
CUT (mm)	75 x 49
POWER CORD / PLUG	-
USER INTERFACE	Single Slider red
COOKING ZONES	4
POWER LIMITATION	3.1 kW / 4.5 kW / Max
BOOSTER	Booster
BRIDGE ZONES	1 bridge
KEY LOCK/ CHILD LOCK	Key Lock
TIMER	Timer / Egg Timer
AUTOMATIC FUNCTIONS	Warming
POWER FLOW	-
STOP & GO	Stop & GO
RECALL	-

Plus



WARMING MODE



BRIDGE ZONES



STOP & GO



TIMER



CHILD LOCK

SERVICE MANUAL RATIO 804 PLUS

Product presentation / presentazione prodotto

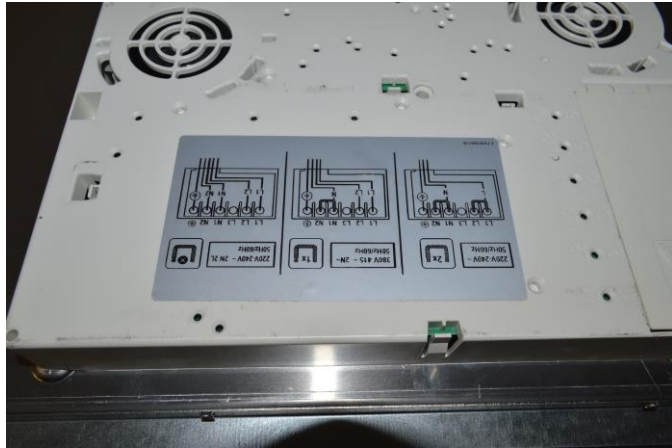


SERVICE MANUAL RATIO 804 PLUS

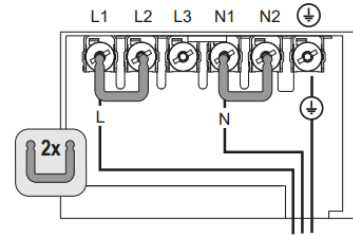
Product presentation / presentazione prodotto



Product presentation / presentazione prodotto

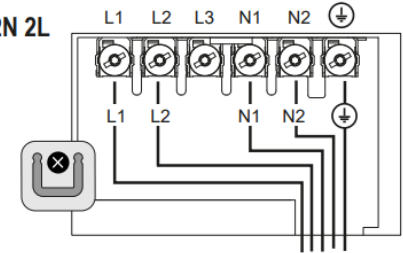


220V-240V ~
50Hz/60Hz



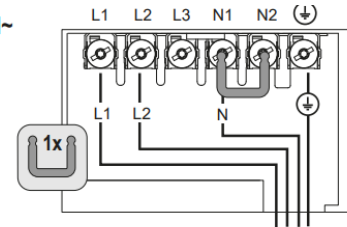
6.2

220V-240V ~ 2N 2L
50Hz/60Hz



6.4

380V 415 ~ 2N~
50Hz/60Hz



6.3

Power supply connection / collegamento elettrico

SERVICE MANUAL RATIO 804 PLUS

Service tool / strumenti per riparazione



Torx 10

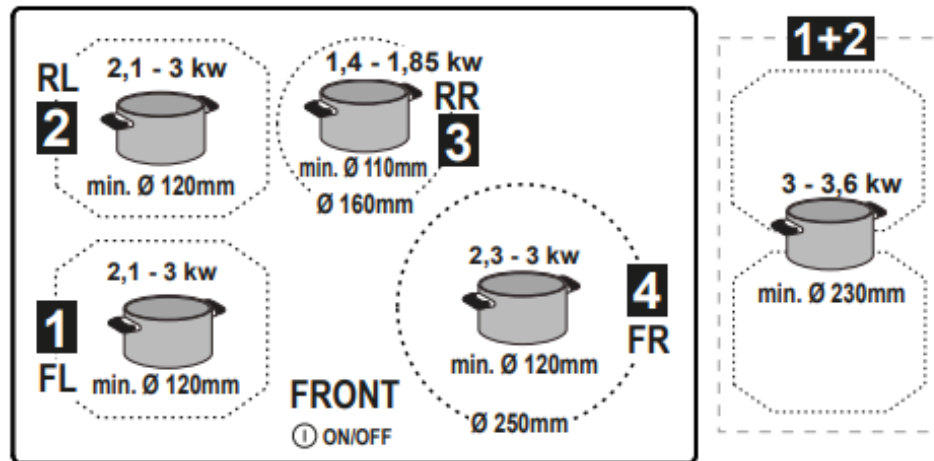
HOW TO REMOVE ELECTRONIC DEVICE / COME RIMUOVERE L'ELETTRONICA



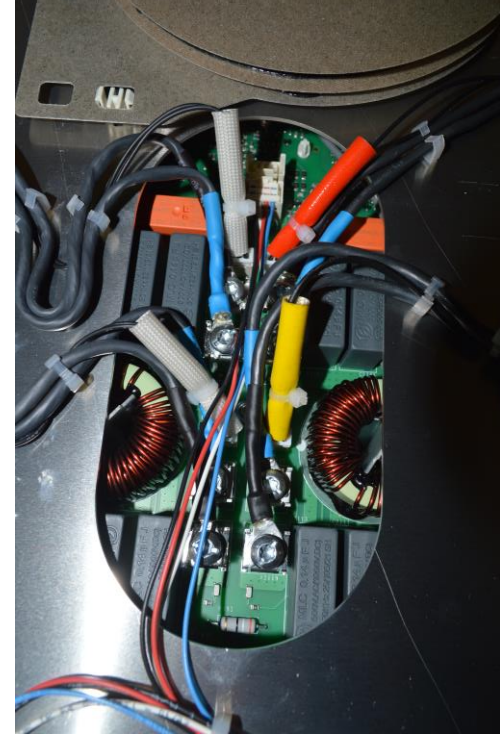
Remove the perimetrical screws to induction module and user interface, lift up der glass cover / rimuovere le viti perimetrali per accedere modulo d'induzione e comandi, sollevare il pannello vetro

SERVICE MANUAL RATIO 804 PLUS

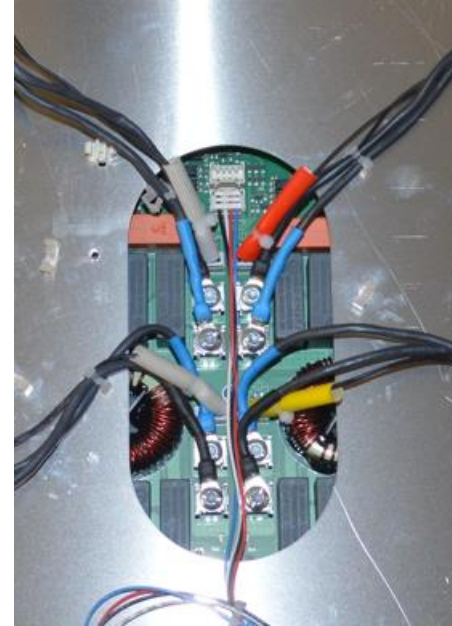
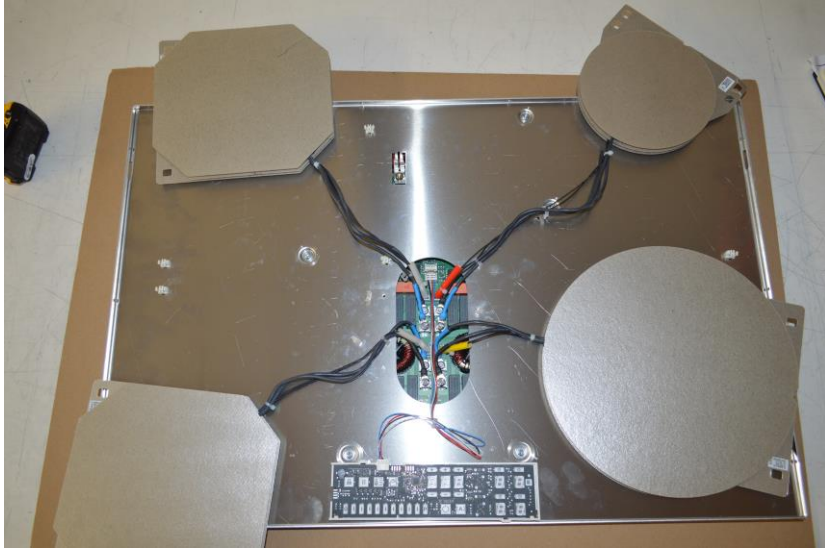
HOW TO REMOVE ELECTRONIC DEVICE / COME RIMUOVERE L'ELETTRONICA



HOW TO REMOVE ELECTRONIC DEVICE / COME RIMUOVERE L'ELETTRONICA

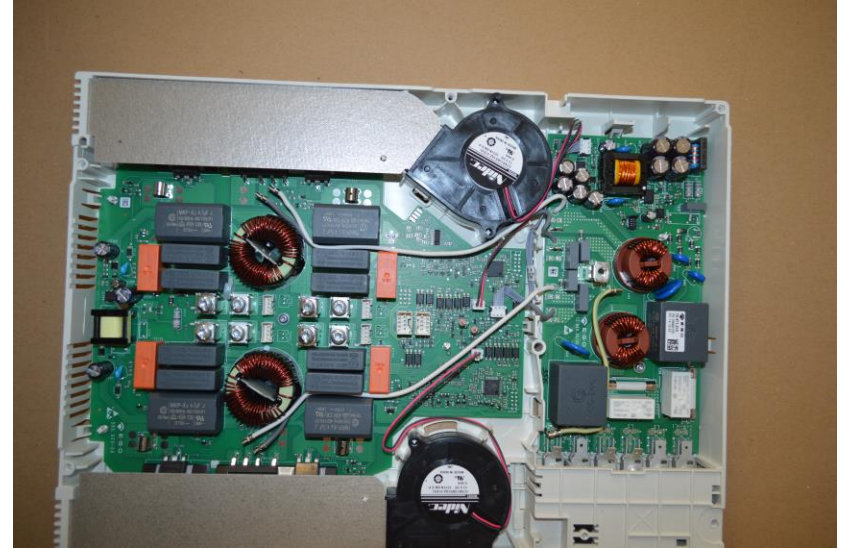
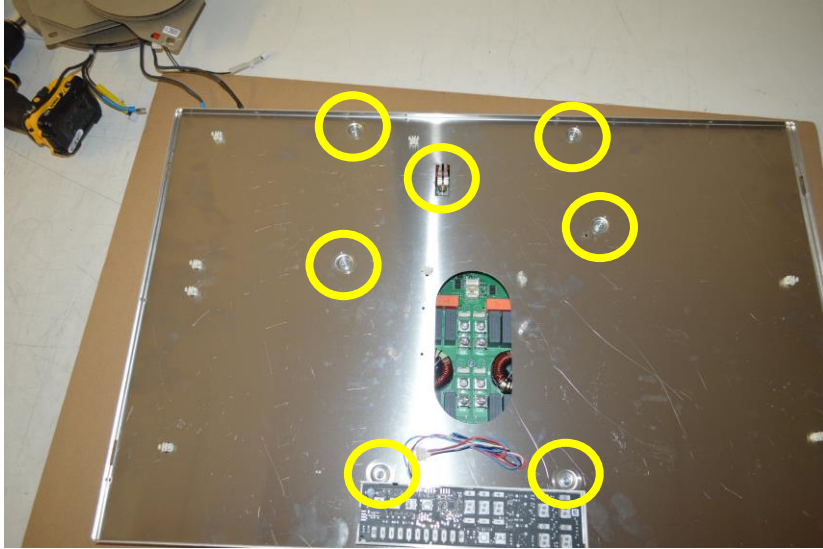


HOW TO REMOVE ELECTRONIC DEVICE / COME RIMUOVERE L'ELETTRONICA




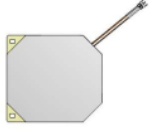
Lift-up the induction coils, disconnect the user interface unscrew the induction coils / Solleva il bobine, disconnettere il cablaggio comandi e delle bobine

HOW TO REMOVE ELECTRONIC DEVICE / COME RIMUOVERE L'ELETTRONICA



Unscrew the induction module / togliere le viti fissaggio modulo

HOW TO REMOVE ELECTRONIC DEVICE / COME RIMUOVERE L'ELETTRONICA

Induction coil OCTA, 210 x 190 mm, 250 mm cable length		2.1/3.0 kW (single) 1.5/1.85 kW (bridge)	72.02000.020 IDT0188516
Induction coil OCTA, 210 x 190 mm, 250 mm cable length		2.1/3.0 kW (single) 1.5/1.85 kW (bridge)	72.02000.021 IDT0188517



HOW TO REMOVE ELECTRONIC DEVICE / COME RIMUOVERE L'ELETTRONICA



Before assembling the glass panel check that all components and wires are placed correctly / prima di assemblare il vetro controllare che tutti i componenti e cablaggi sono posizionati correttamente

ERRORS LIST/LISTA ERRORI

Error Code	Meaning	Behavior	Possible Causes	Remedy
E2	Overheat of temperature sensor for cooking zone	Corresponding cooking zone is turned OFF	Empty cookware	Do not heat-up empty pots
			Wrong cookware	Use appropriate cookware
			Pot or glass temperature is too high Electronic temperature too high	Cool down system
E3	Wrong pot	Corresponding cooking zone(s) is/are turned OFF	Cookware is losing its magnetic characteristics	Use appropriate cookware
			Internal error in generator's circuitry	Replace the generator
			Pot creates on the module an improper operating point which can destroy devices, e.g IGBT.	1. The error is automatically cancelled after 8s and the cooking zone can be used again. In case of further upcoming errors the pots have to be changed. 2. Replace the generator if the error comes without a pot on the cooking zone.
E4	Configuration error	Cooking zone cannot be turned ON	Induction module is not configured yet	Perform a manual configuration (see documentation of Touch Control for details)
			Induction module configuration data error	Erase and re-configure cooking zone. If the listed points are not successful replace the module

ERRORS LIST/LISTA ERRORI

Error Code	Meaning	Behavior	Possible Causes	Remedy
E5	No communication between User Interface and Induction Generator	Cooking zone cannot be turned ON	LIN cabling or power supply cabling defective (e.g. missing line conductor)	Check cabling and power supply voltage
			No mains voltage on slave board	Check mains voltage connection on slave board
			Internal error in generator's or filter's circuitry	Replace the generator
			(Mixed version) HiLight Relay Voltage Error -Defect hardware device	Replace the generator
			Error configuration data	Erase and re-configure cooking zone.
E6	Power supply voltage is out of range (voltage and/or frequency)	Cooking zone cannot be turned ON	Power supply voltage is out of range (see technical data for details)	Check mains voltage
			Wrong mains frequency or mains voltage phase signal problem.	Check mains voltage phase signal
			Internal error in generator's circuitry	Replace the generator
E7	Internal error	Cooking zones are turned OFF	-	Replace the generator
E8	Fan failure	Corresponding cooking zones are turned OFF	Fan blocked by dust or fabrics	Clean and remove foreign bodies
			Fan or module electronics defective	Replace the generator
E9	Temperature sensor error for cooking zone	Corresponding cooking zone is turned OFF	Temperature sensor line for cooking zone is open or short-circuited	Replace inductor
		Corresponding cooking zone is turned ON on a low energy level to defrost a large amount of frozen goods	Frozen goods are cooling the temperature sensor to below 0°C as the energy level is too low	Wait until temperature sensor is heated up to a level over 0°C and choose a higher energy level to defrost

Error Code	Meaning	Behavior	Possible Causes	Remedy
EA	Internal error	Cooking zones are turned OFF	Interference or abnormal signal (e.g. EMC disturbances, condensation on PCB) detected	1. Switch off hob, remove all pots and let the hob cool down 2. If error persists: replace generator
			Hardware defect (e.g. flash or MCU wrong, defect inductor)	1. Switch off hob, remove all pots and let the hob cool down 2. If error persists: replace generator 3. If inductor is defect: replace inductor
EH	Temperature sensor stuck for cooking zone	Corresponding cooking zone is turned OFF	Not enough temperature change after switch on the hob	Cool down the glass

ERRORS LIST/LISTA ERRORI

Error Code	Meaning	Behavior	Possible Causes	Remedy
ER03	Continuous key activation detected	Cooktop switches off after 10 sec	Water or cookware placed on TC's SmartKiis	Remove water or cookware from the glass
ER20	Internal error inside TC	Cooktop switches off	-	Replace TC
ER21	Over temperature	Cooktop switches off	Temperature sensor on TC has detected a temperature > 85 °C	Let the cooktop cool down (error disappears if temperature is < 75°C) Check heat insulation of the TC
ER22	Internal error inside TC	Cooktop switches off after 3.5 - 7.5 sec	-	Replace TC
ER31	Configurations inside Touch Control and induction are incongruent	ER31 is displayed continuously	The configuration data inside the induction generator is different from the configuration inside the TC	Replace TC. If error is still occurring, replace the induction generator.
ER35	Internal error inside TC	Cooktop switches off	-	Replace TC
ER36	Internal error inside TC	Cooktop switches off	-	Replace TC
ER42	Secondary power supply implausible	the display is connected to the 13,2 V by an DC/DC converter	Can be a broken wire on the LIN-cable. Can be broken the TouchControl.	Check the 13,2 V at the Slim. If the 13,2V are not there check the cabling. If the 13,2 V are available replace the TouchControl.
ER47	No communication to at least one LIN subscriber	ER47 is displayed continuously	LIN cable damaged No power voltage supply for LIN subscriber LIN subscriber defective	Check and replace LIN cabling Check power supply voltage Replace TC or induction generator.

An aerial view of a city skyline, likely New York City, with a prominent geometric overlay of semi-transparent triangles in shades of red and blue. The Empire State Building is visible in the center. The text 'elica' is centered in the upper half of the image.

 elica

MetLife