



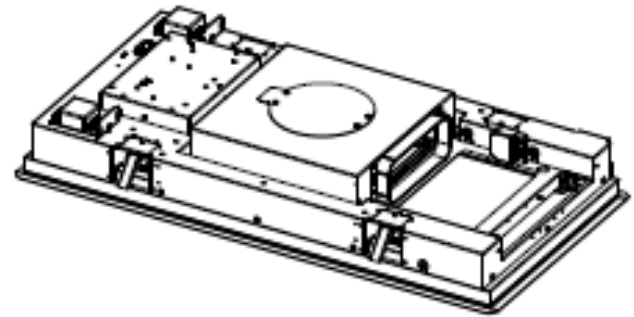
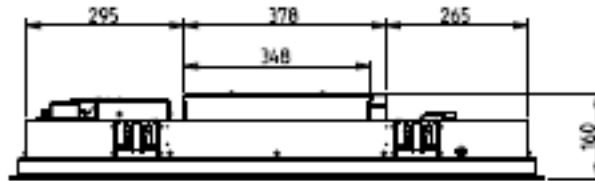
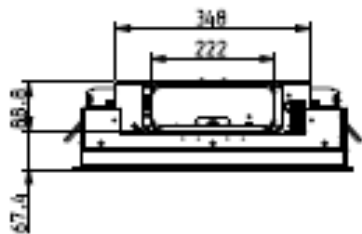
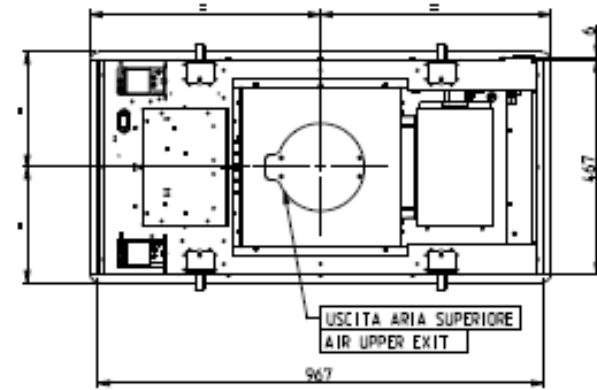
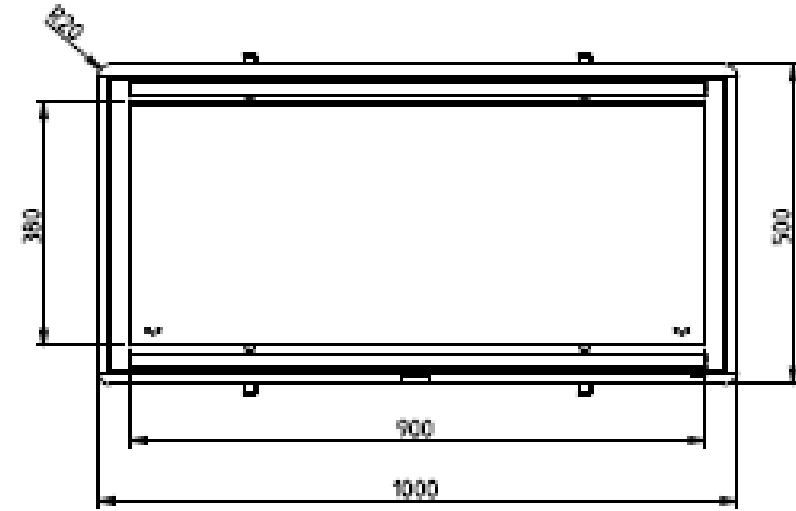
# SERVICE MANUAL ILLUSION H16 NO-MOTOR @ CONNECT

SM2300012

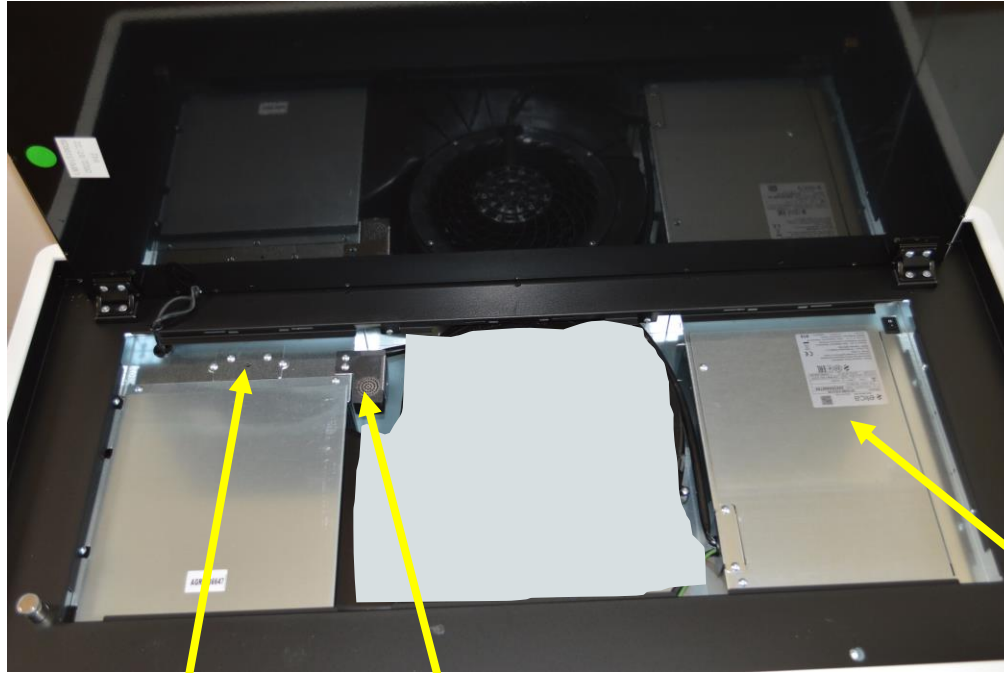
## PRODUCT PRESENTATION / PRESENTAZIONE DEL PRODOTTO



## PRODUCT PRESENTATION / PRESENTAZIONE DEL PRODOTTO



## PRODUCT PRESENTATION / PRESENTAZIONE DEL PRODOTTO

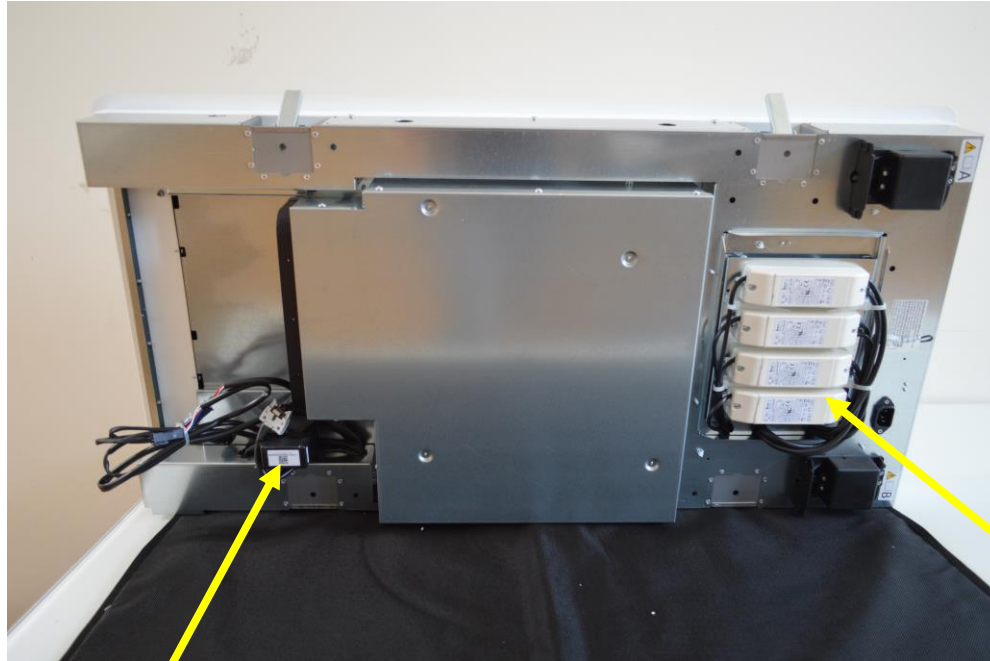


WiFi / WiFi

Sensor / Sensore

Electronic and transformer device /  
Impianto elettrico e trasformatori

## PRODUCT PRESENTATION / PRESENTAZIONE DEL PRODOTTO



WiFi / WiFi

Electronic and transformer device /  
Impianto elettrico e trasformatori

## HOW TO REMOVE ILLUMINATION / COME RIMUOVERE L'ILLUMINAZIONE



Lift up the LED bar using a screwdriver. Be carefully don't damage the frame. Disconnect the LED bar connection in order to replace it / Sollevare la barra LED con un cacciavite. Fai attenzione a non danneggiare il telaio. Scollegare la connessione della barra LED per sostituirla.

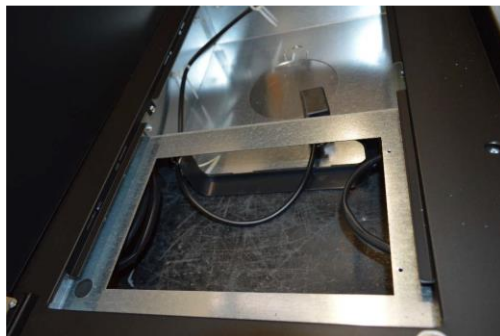
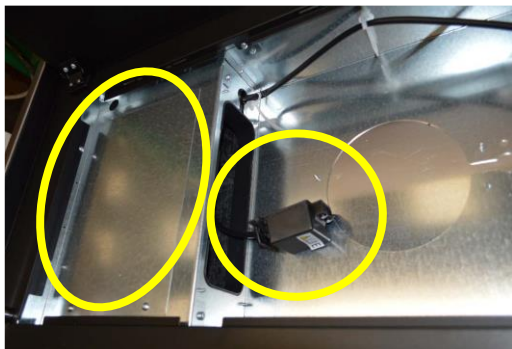
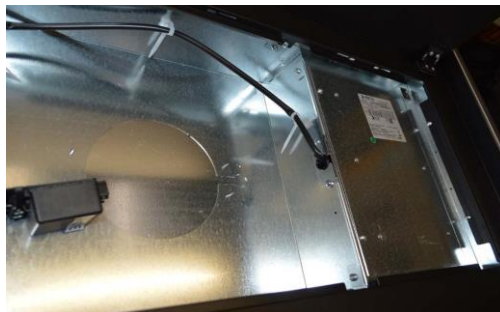


## HOW TO REMOVE FRONT PANEL / COME RIMUOVERE IL PANNELLO FRONTALE



Open panel and remove screws / aprire il pannello e rimuovere le viti

## HOW TO REMOVE FRONT PANEL / COME RIMUOVERE IL PANNELLO FRONTALE



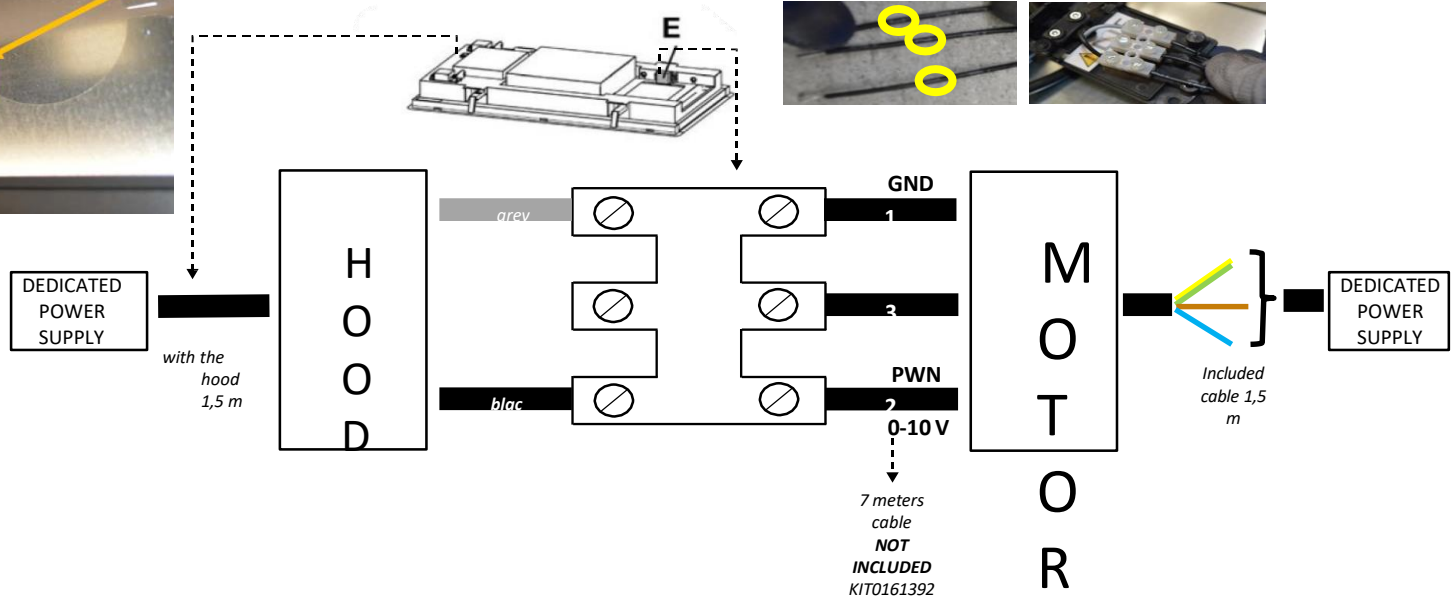
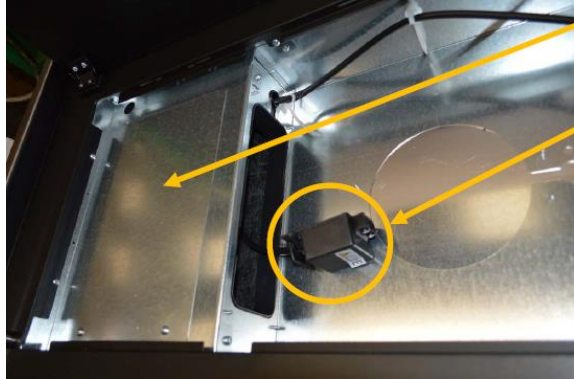
Remove grease filter. Inside the hood there are Service panel for air outlet connection, 12NC, an on-off switch and Connection device for external motor GME/ Rimuovere i filtri grassi. All'interno della cappa ci sono un pannello service per il collegamento uscita aria, 12NC, un interruttore on-off e un device per connessione motore esterno GME





# SERVICE MANUAL ILLUSION H16 NO-MOTOR @ CONNECT

## HOW TO CONNECT EXTERNAL MOTOR GME/ COME CONNETTERE IL MOTORE ESTERNO GME

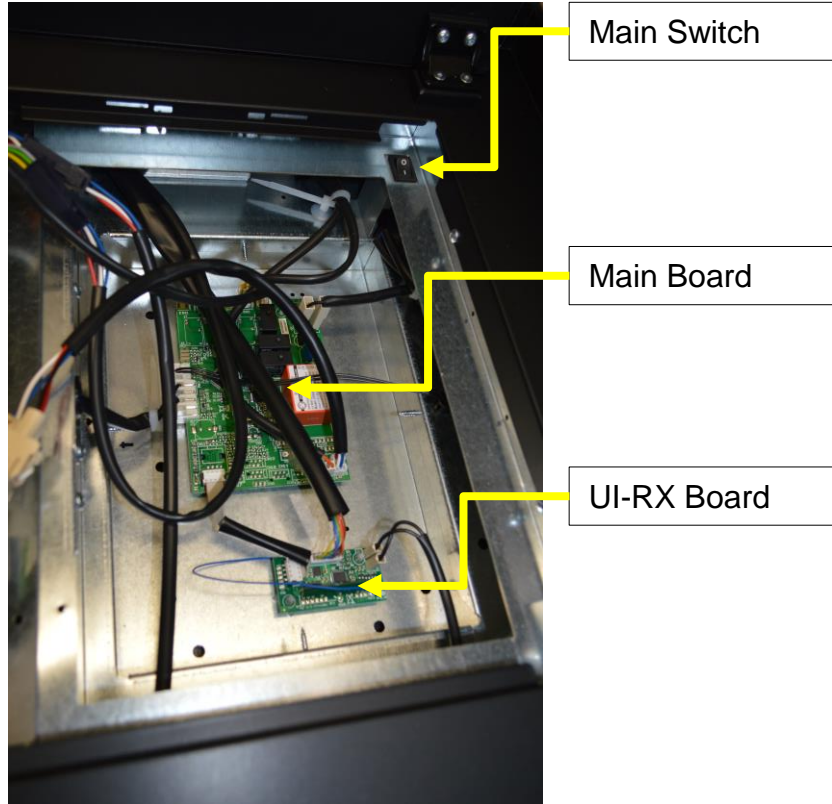


## HOW TO REMOVE ELECTRONIC DEVICE / COME RIMUOVERE L'ELETTRONICA

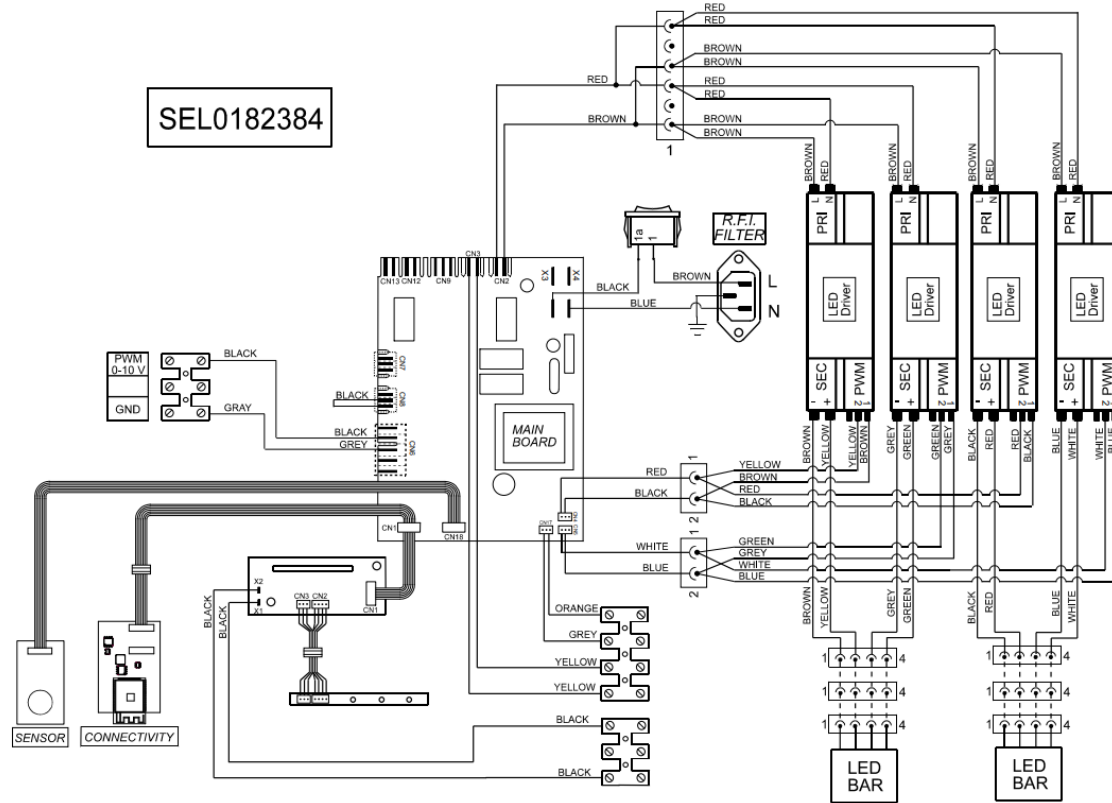


Remove grease filters and remove electronic device screws / Rimuovere i filtri grassi e le viti della scatola elettronica

## HOW TO REMOVE ELECTRONIC DEVICE / COME RIMUOVERE L'ELETTRONICA



## HOW TO REMOVE ELECTRONIC DEVICE / COME RIMUOVERE L'ELETTRONICA

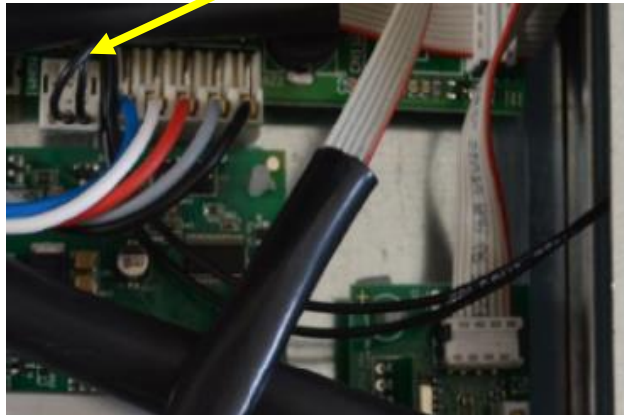


## HOW TO REMOVE ELECTRONIC DEVICE / COME RIMUOVERE L'ELETTRONICA



Hood runs sensor calibration for 5 minutes each time when is connected to power supply, the motor starts running at first speed and LED display is flashing / La calibrazione del sensore per 5 minuti avviene ogni volta quando la cappa verrà collegata alla corrente elettrica, il motore parte in prima velocità ed il display lampeggia

IF MOTOR DOES NOT RUN CHECK FOLLOWING / SE IL MOTORE NON PARTE DA CONTROLLARE

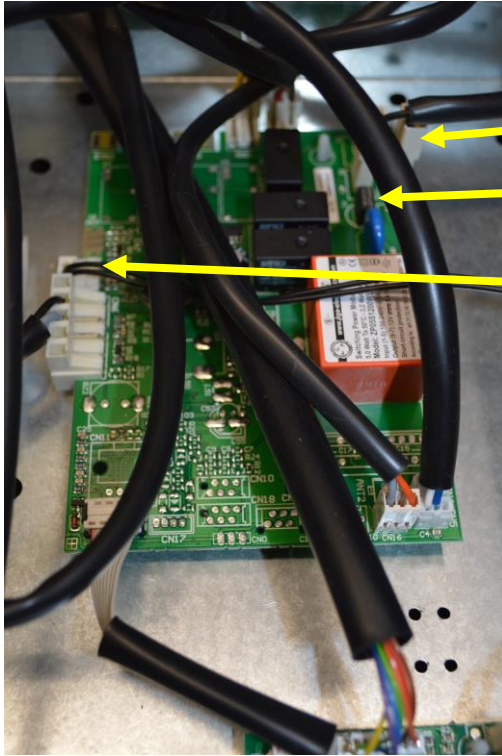


1. Check if control LED is white
2. Check if WindowSwitchWire is damaged
3. Connect remote control to charger during testing
4. Run sync again with the product

1. Controlla che luce è bianca
2. Controlla se il cavo contatto finestra è tagliata
3. Collega il telecomando al caricatore
4. Effettuare affiliazione



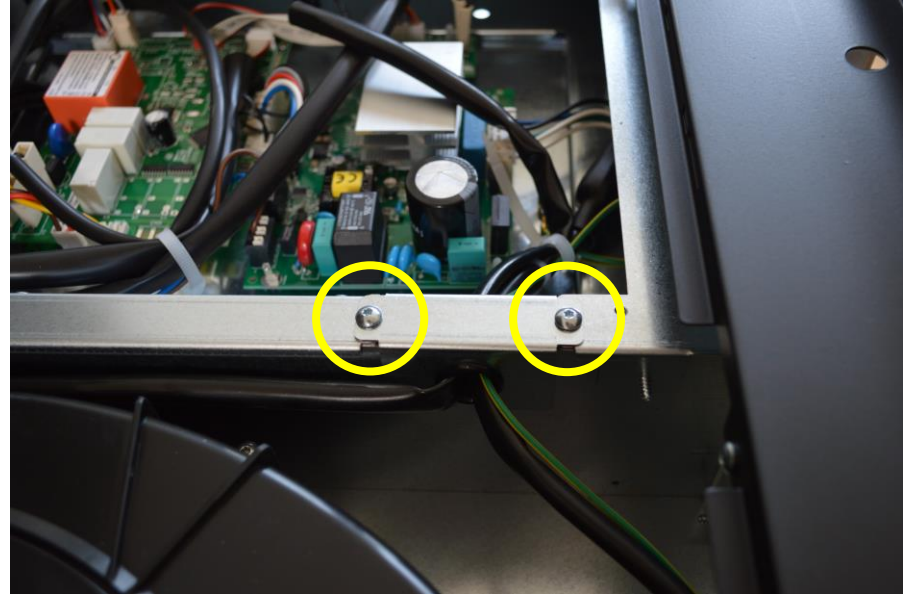
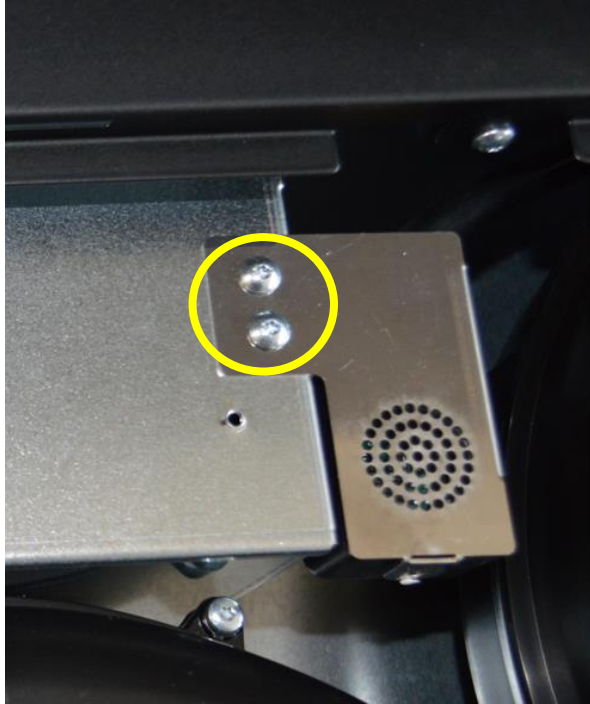
IF MOTOR DOES NOT RUN CHECK FOLLOWING / SE IL MOTORE NON PARTE DA CONTROLLARE



1. Check if main switch is on
2. Check if power supply reach the main board
3. Check if fuse is broken
4. check that all connections are fit proper
5. Check if window switch wire is damaged

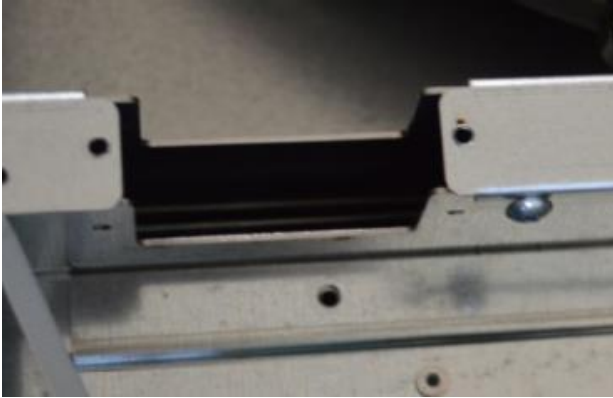
1. Controlla che l'interruttore è a 1
2. Arriva la corrente alla scheda principale
3. Fusibile è aperto
4. Controlla che tutte le connessione sono ok
5. Controlla se il cavo contatto finestra e danneggiata

## HOW TO REMOVE ELECTRONIC DEVICE / COME RIMUOVERE L'ELETTRONICA



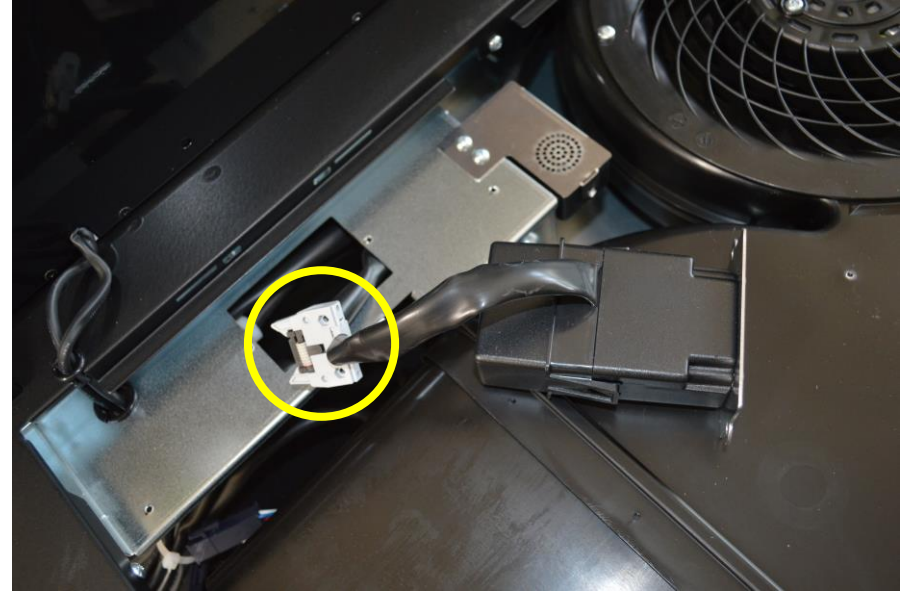
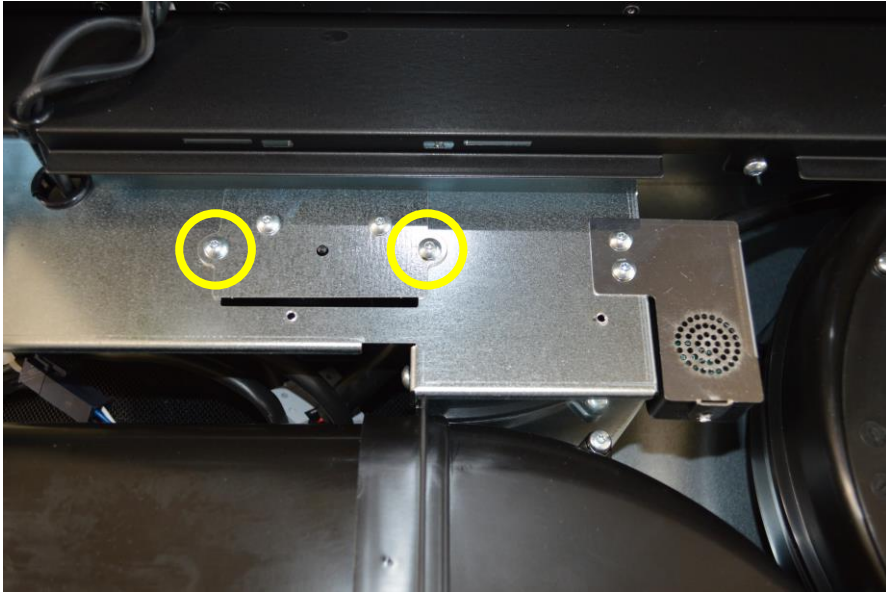
Unscrew the 2 fixing screws at left side of sensor, unscrew cable holder /  
togliere le 2 viti di fissaggio del sensore, togliere il passacavo

## HOW TO REMOVE ELECTRONIC DEVICE / COME RIMUOVERE L'ELETTRONICA



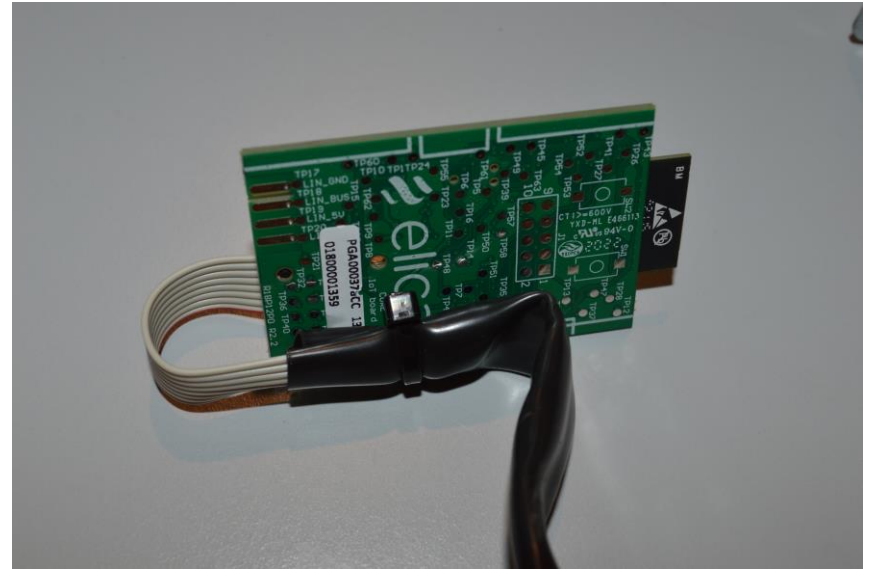
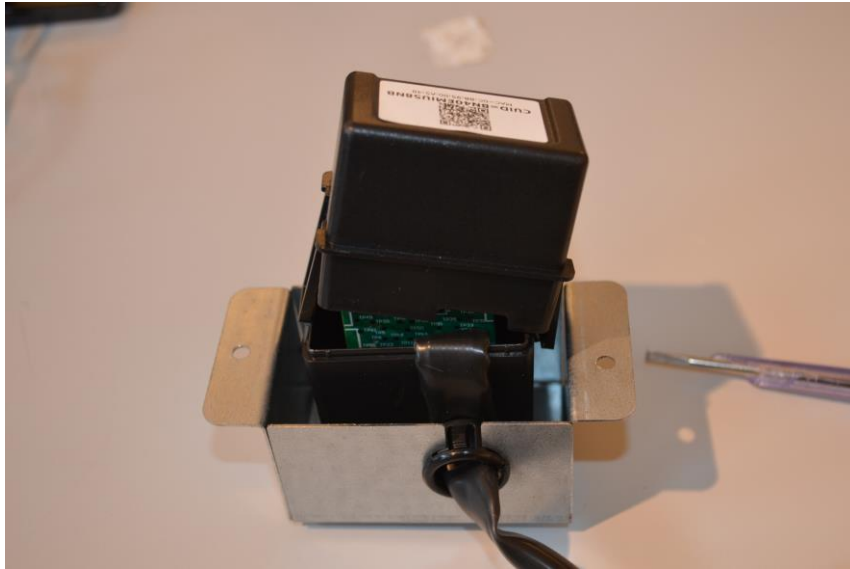
Disconnect sensor and replace it / staccare il sensore e sostituirlo

## HOW TO REMOVE ELECTRONIC DEVICE / COME RIMUOVERE L'ELETTRONICA



Screws from the WiFi support and disconnect the device / svitare le viti di fissaggio supporto WiFi e disconnetter il dispositivo

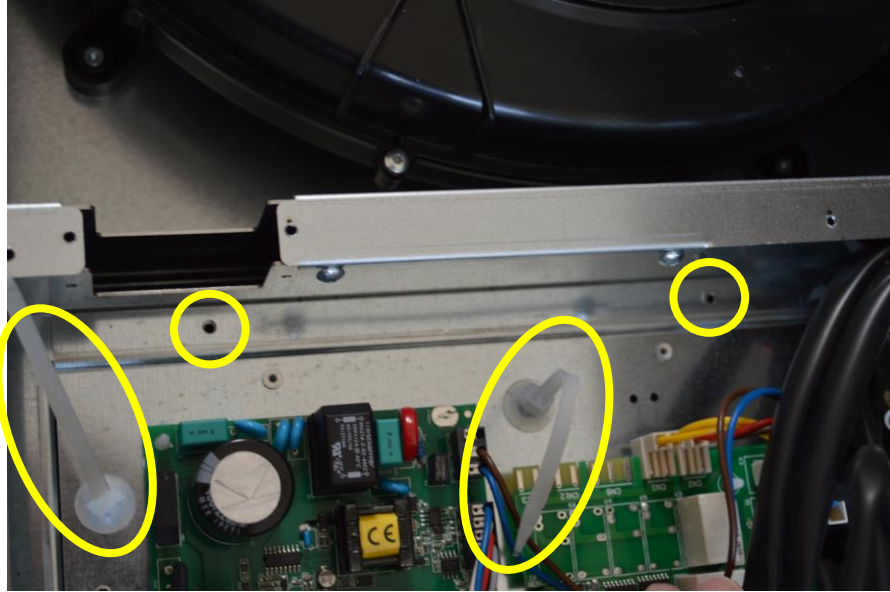
## HOW TO REMOVE ELECTRONIC DEVICE / COME RIMUOVERE L'ELETTRONICA



Lift-up the cover and replace the complete WiFi board/ togliere il coperchio e sostituire tutta la scheda WiFi



## HOW TO REMOVE TRANSFORMERS / COME RIMUOVERE I TRASFORMATORI



Remove fixing screw of support device, disconnect all electrical light connections, release all cable holders / togliere le viti fissaggio supporto elettronica, staccare tutte le connessioni luce e aprire tutti blocca cavi

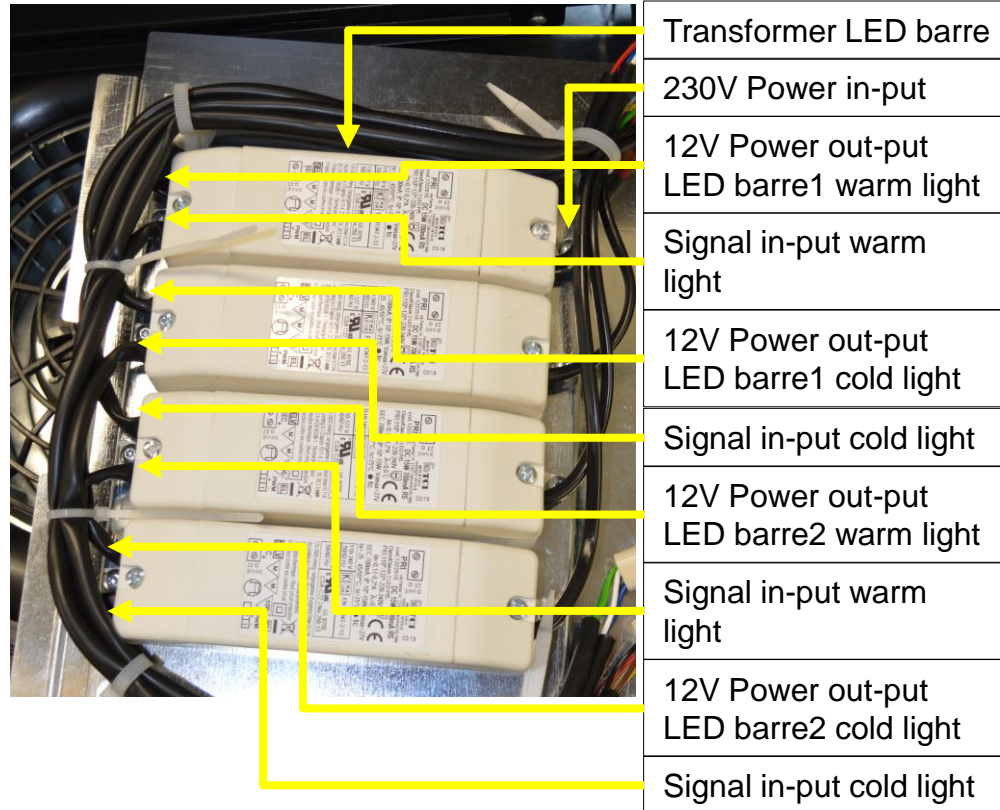


## HOW TO REMOVE TRANSFORMERS / COME RIMUOVERE I TRASFORMATORI

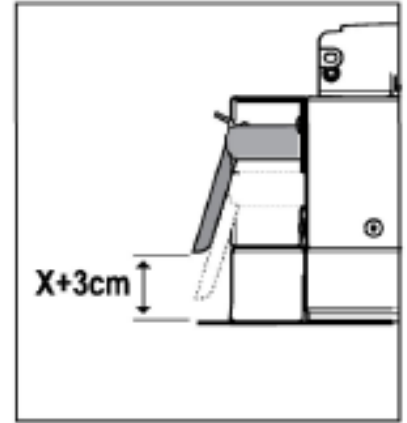


Disconnect the light connection, lift-up the support bracket and turn it to reach the transformers / staccare le connessioni luce, sollevare il supporto e girarlo per arrivare ai trasformatori

## HOW TO REMOVE TRANSFORMERS / COME RIMUOVERE I TRASFORMATORI

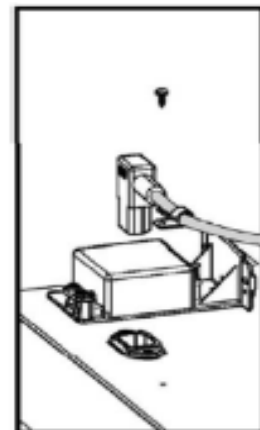
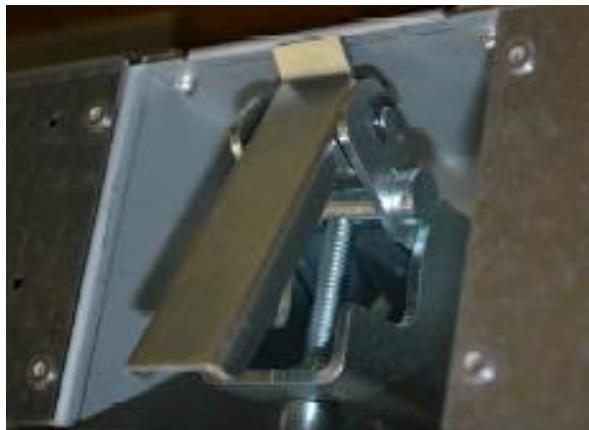


## HOW TO REMOVE THE HOOD FROM THE CEILING / COME RIMUOVERE LA CAPPA DAL SOFFITTO



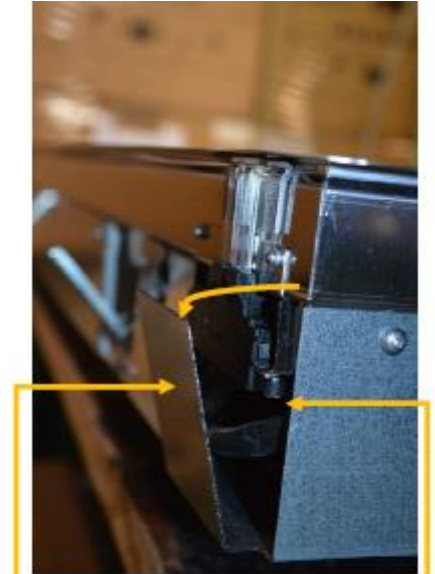
Open the 4 fixing screws until the unit is in down position (check installation manual) / Allentare le 4 viti di fissaggio (consultare il libretto di installazione)

## HOW TO REMOVE THE HOOD FROM THE CEILING / COME RIMUOVERE LA CAPPA DAL SOFFITTO



Lift-up the hood to ceiling and continue to open the 4 fixing screws until they are completely closed. Remove hood from ceiling and disconnect electrical power supply / Sollevare la cappa verso il soffitto utilizzando il meccanismo apposito per il fissaggio. Rimuovere la cappa dal soffitto e scollegare l'alimentazione elettrica.

## HOW TO REMOVE LED INDICATOR UI / COME RIMUOVERE L'INDICATORE LED UI



User Interface LED **NB.** To replace the LED indicator the hood must be removed from ceiling / UI indicatore LED. **NB.** Per sostituire l'indicatore LED è necessario rimuovere la cappa dal soffitto

Open the metal protection by bending it slightly, after replacement reclose it. Unscrew the 2 fixing screws and remove the LED indicator.

## HOW TO REMOVE LED INDICATOR UI / COME RIMUOVERE L'INDICATORE LED UI

Disconnect LED indicator wiring /  
Disconnettere il connettore  
dell'indicatore LED





An aerial view of a city skyline, likely New York City, with a prominent geometric overlay of semi-transparent triangles in shades of red and blue. The Empire State Building is visible in the center. The text 'elica' is centered in the upper half of the image.

 elica

MetLife

WORLDWIDE