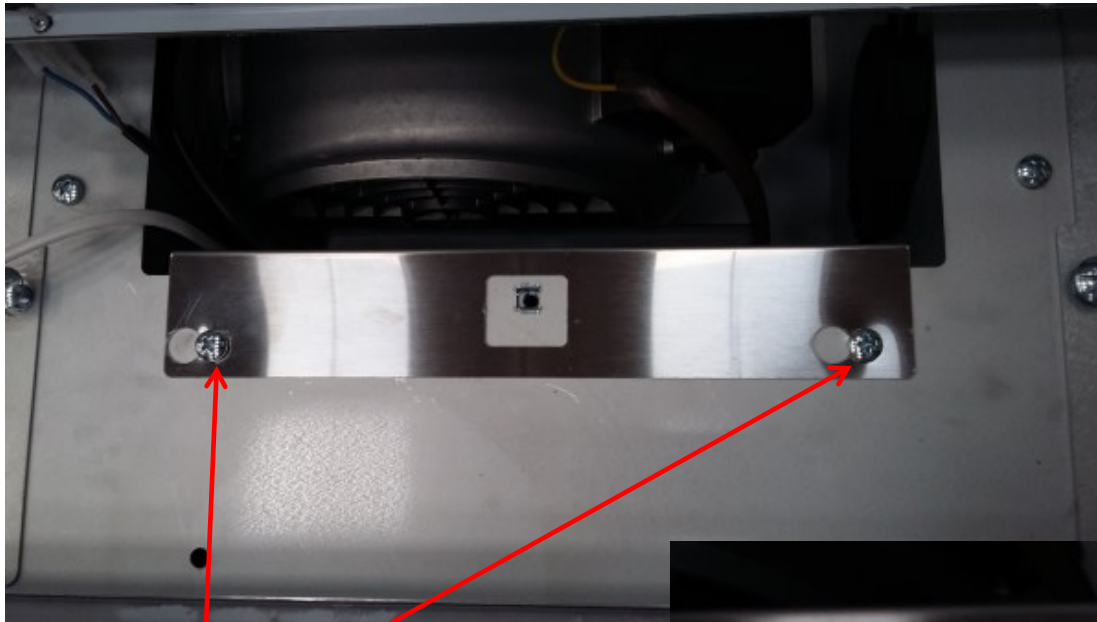




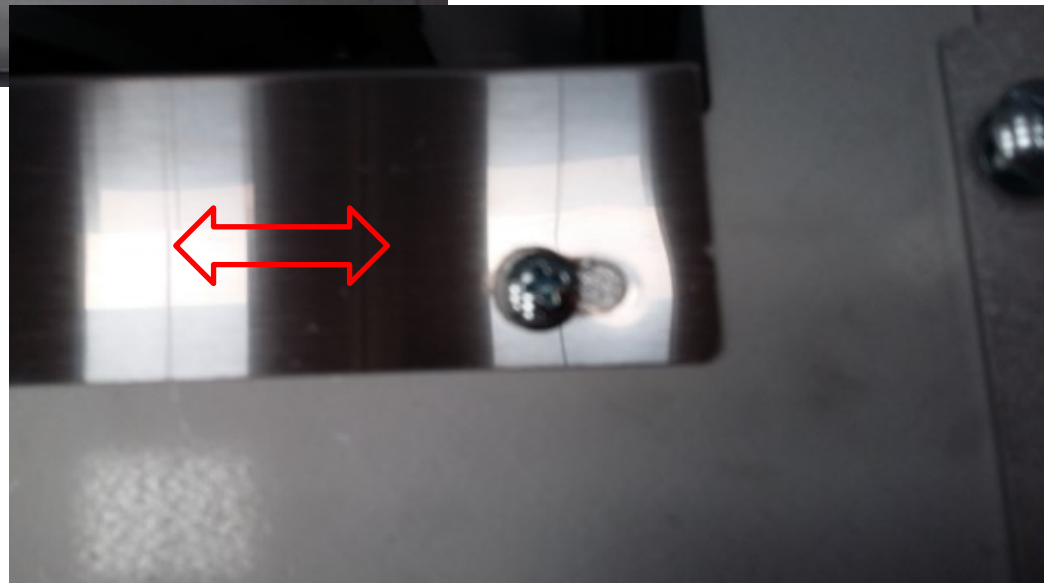
LINK INSTRUCTION BOOK



Remote Control underneath the grease filter

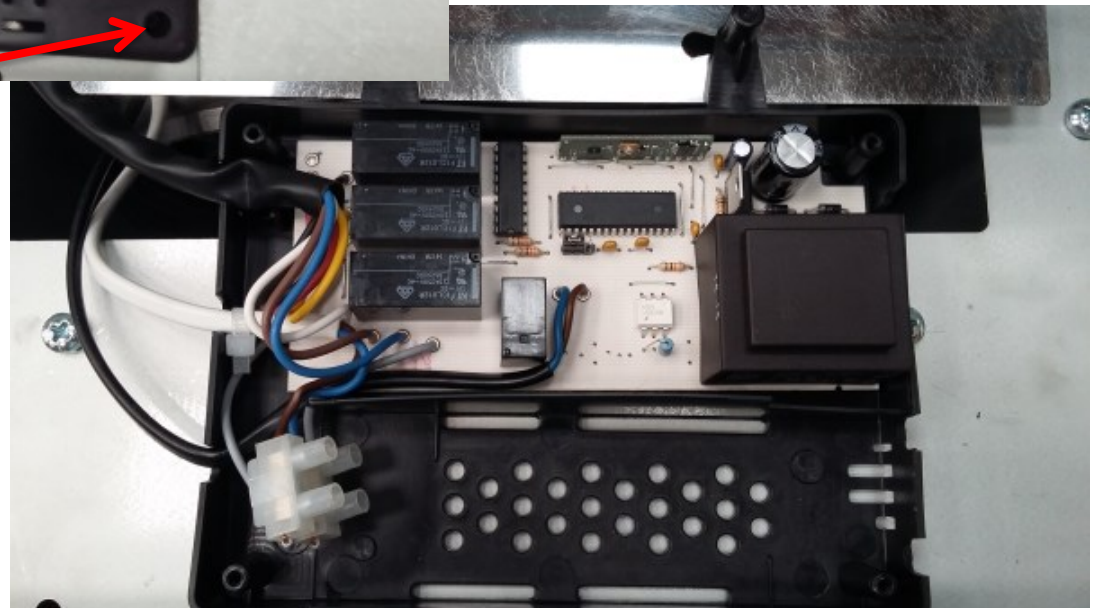


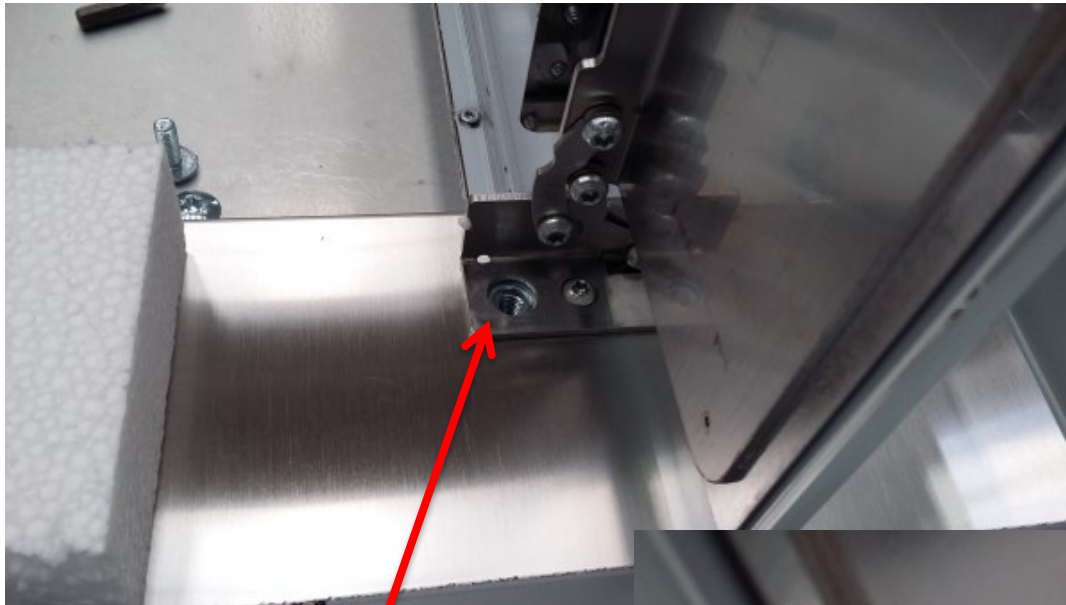
Open the fixing screws
und move sideways
the connection box in
oder to take it out of
the hood



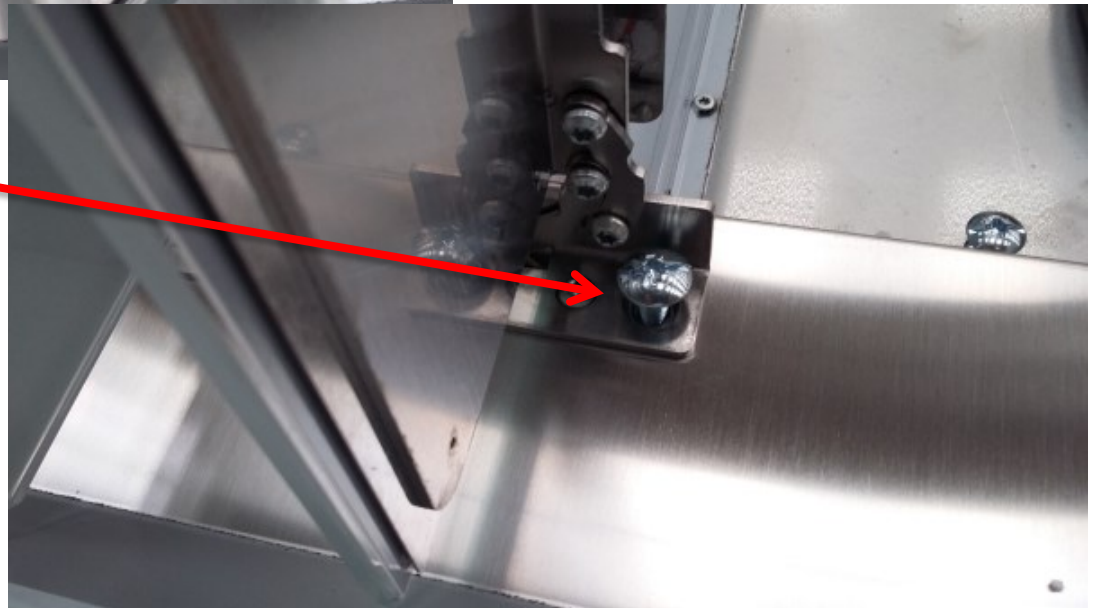


Unscrew the 4 fixing screws to get access to the PCB.

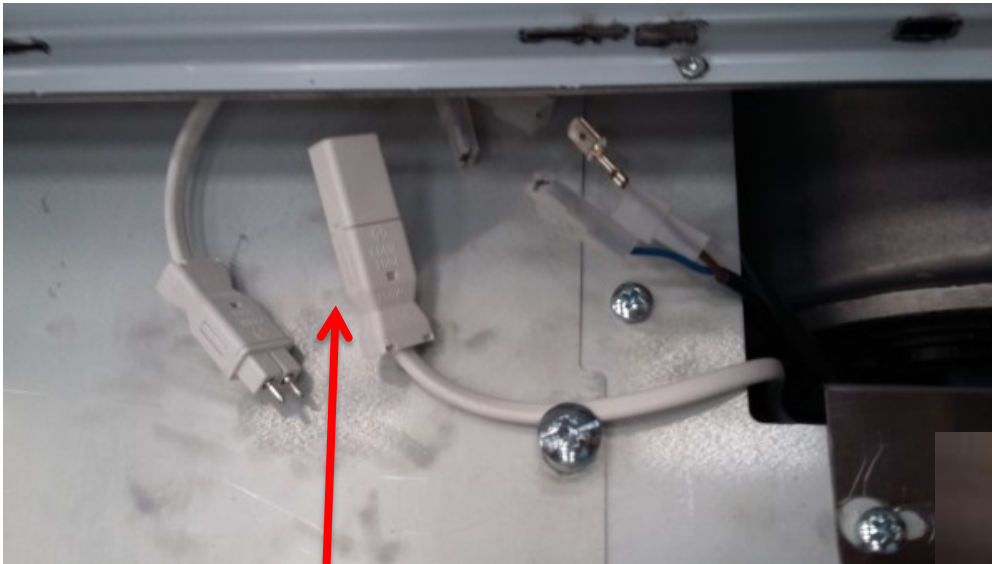




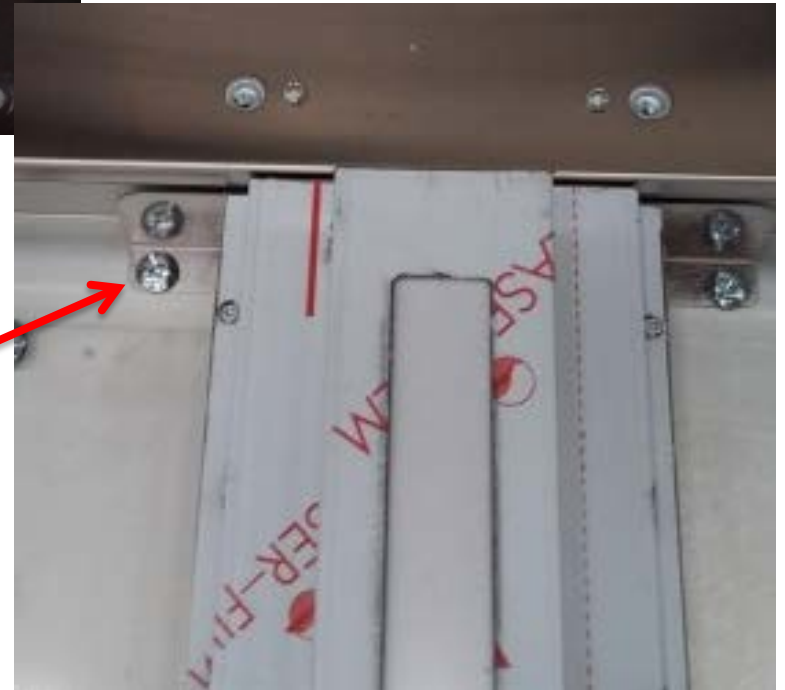
Unscrew the 4 fixing screws of the panels and remove carefully the panel.



To reach motor, light department and user interface it is necessary to work with 2 technicians !!

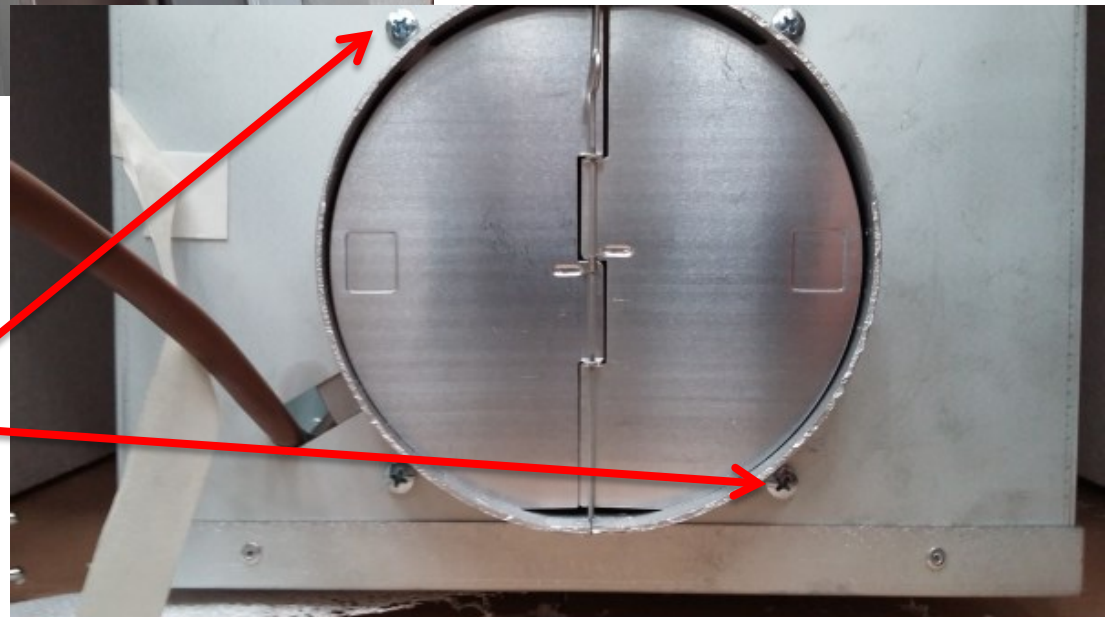


Disconnect the wiring for the lamps and remote control.
Unscrew the 4 fixing screws and remove the complete lamp compartment carefully.





Unscrew the 4 fixing screws of the 2 service panel to get access to the motor and then unscrew the 4 fixing screws of the motor, disconnect motor .





Remove front panel and light department as described previously and disconnect the wiring.

Unscrew the 8 fixing screws to become access to the light department.



To carry out service on CLOUD NINE Hood you need 2 technician.

To reach main board 1 technician is necessary, for motor , illumination and user interface you need 2 technician, it is not necessary to remove hood from ceiling.