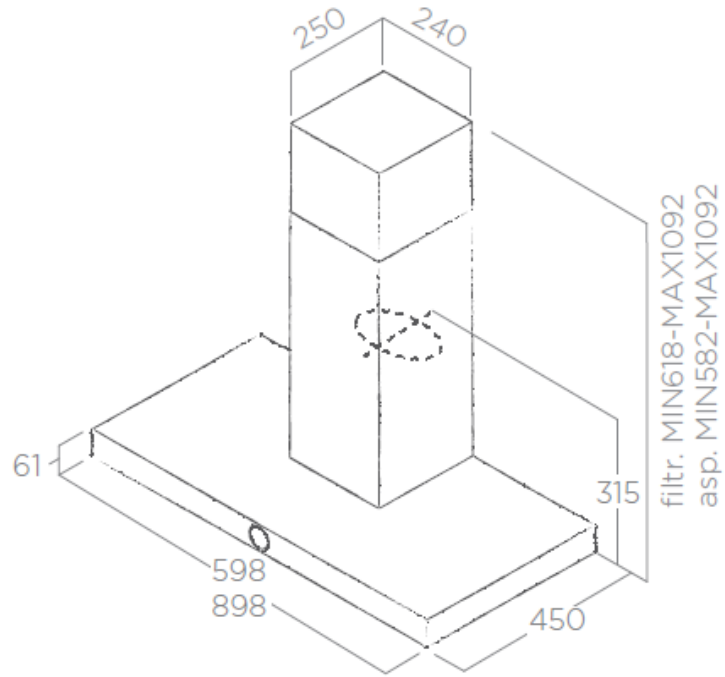




SERVICE MANUAL LOL

SM200008

Product presentation / Presentazione prodotto

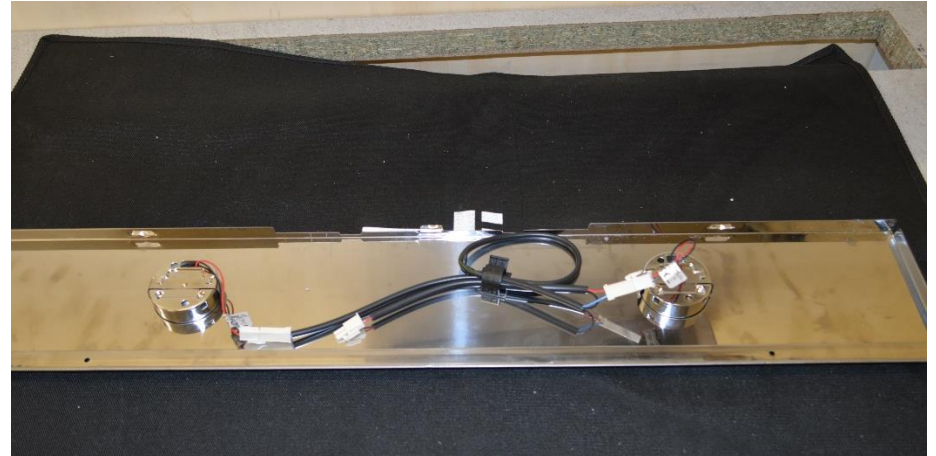


HOW TO REMOVE ILLUMINATION / COME RIMUOVERE L'ILLUMINAZIONE



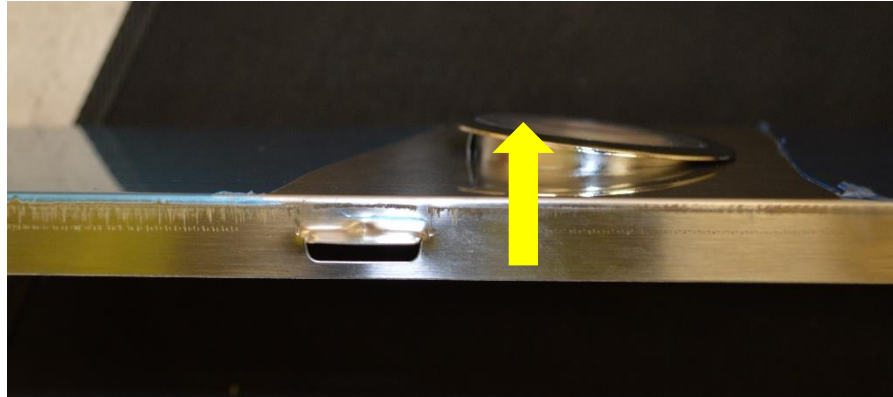
Remove grease filter. Product label with 12NC is inside the hood / rimuovere filtro grassi. L'etichetta caratteristiche con 12NC è presente all'interno del prodotto

HOW TO REMOVE ILLUMINATION / COME RIMUOVERE L'ILLUMINAZIONE



Disconnect Lamp connection and unscrew n. 2 screws to release lamp support / Scollegare i collegamenti delle lampade e rimuovere le 2 viti del supporto lampada

HOW TO REMOVE ILLUMINATION / COME RIMUOVERE L'ILLUMINAZIONE



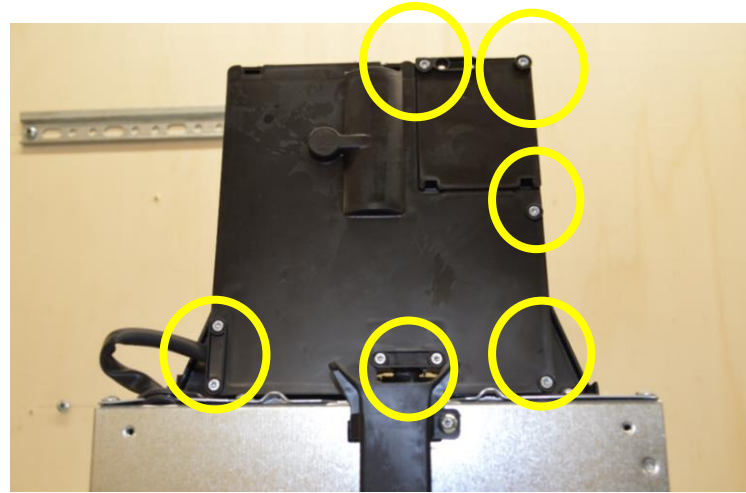
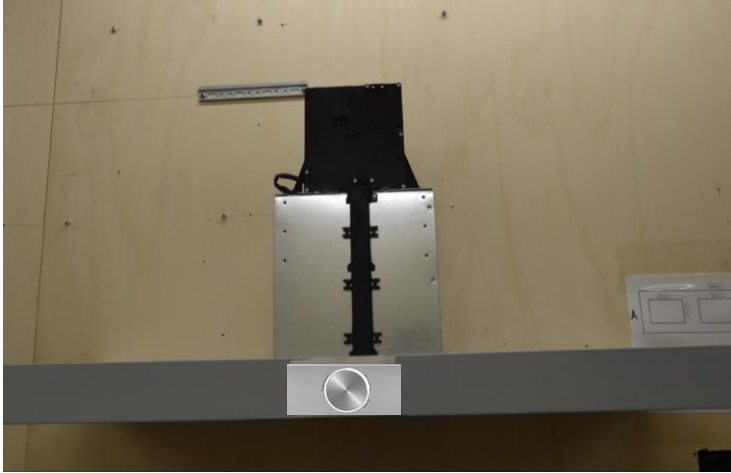
Press lateral springs and then push out the lamp / Per rimuovere le lampade fare una leggera pressione sulle molle laterali

HOW TO REMOVE ELECTRONIC DEVICE / COME RIMUOVERE L'ELETTRONICA



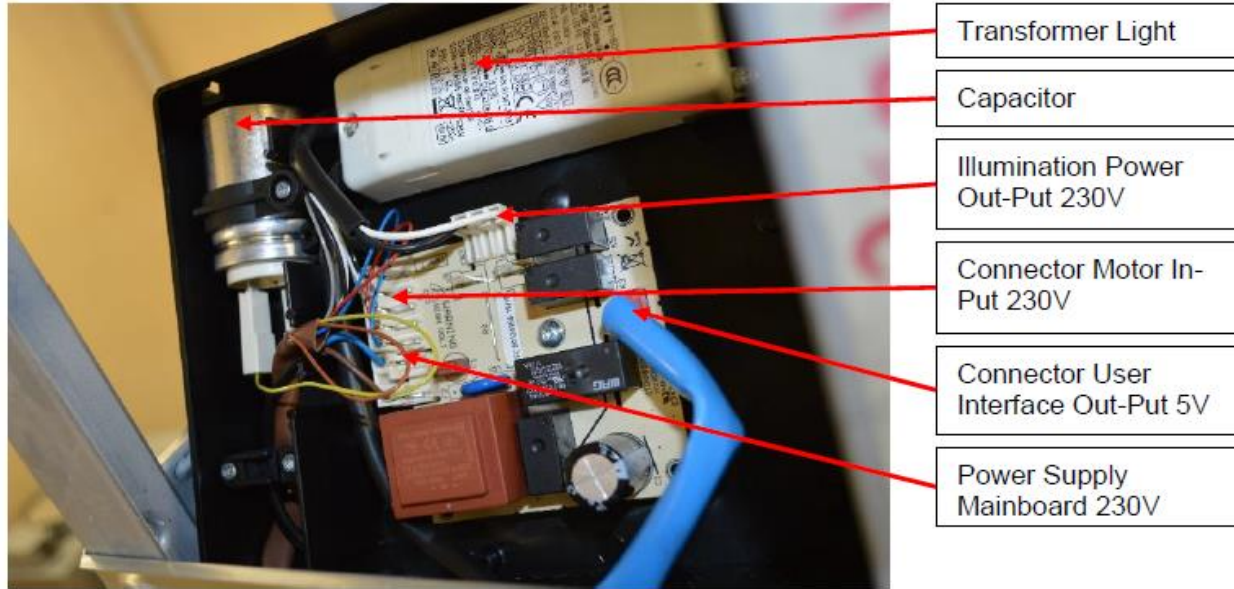
Remove chimneys / Rimuovere i camini

HOW TO REMOVE ELECTRONIC DEVICE / COME RIMUOVERE L'ELETTRONICA

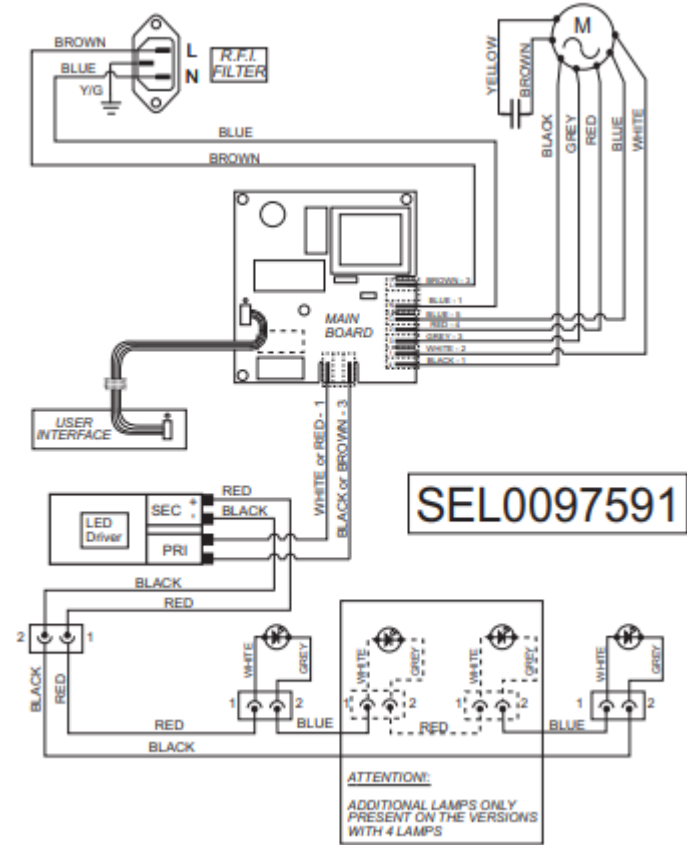


Unscrew 8 screws to get access to electronic device / Rimuovere 8 viti per accedere alla scatola elettronica

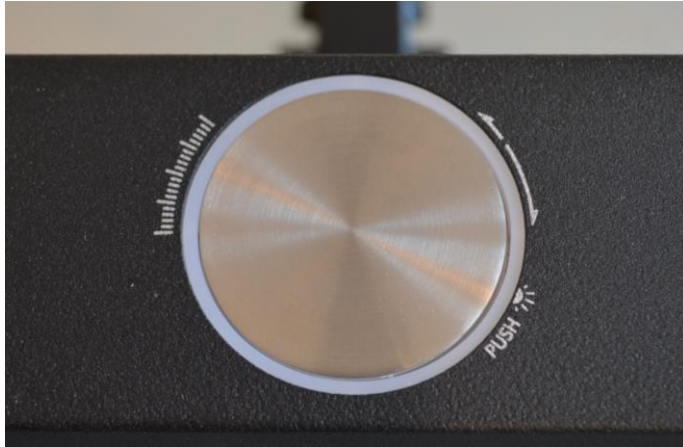
HOW TO REMOVE ELECTRONIC DEVICE / COME RIMUOVERE L'ELETTRONICA



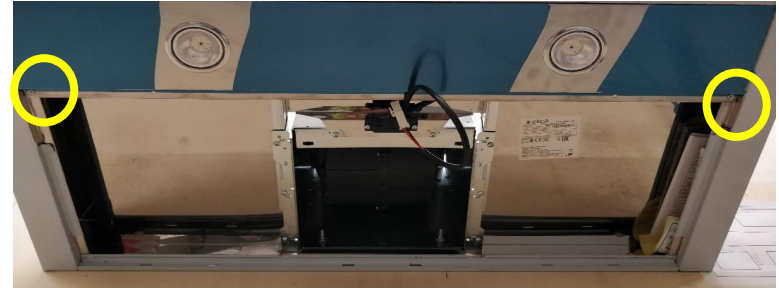
HOW TO REMOVE ELECTRONIC DEVICE / COME RIMUOVERE L'ELETTRONICA



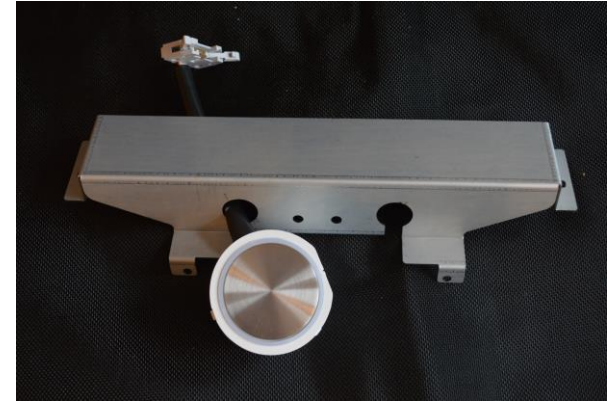
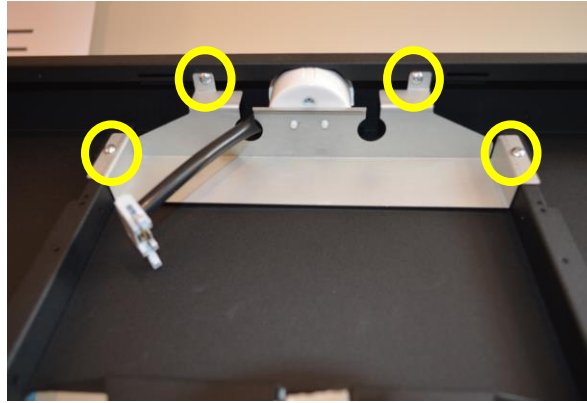
HOW TO REMOVE USER INTERFACE / COME RIMUOVERE IL COMANDO



Unscrew 2 screws and remove lamp support / Rimuovere 2 viti e sganciare il supporto lampada

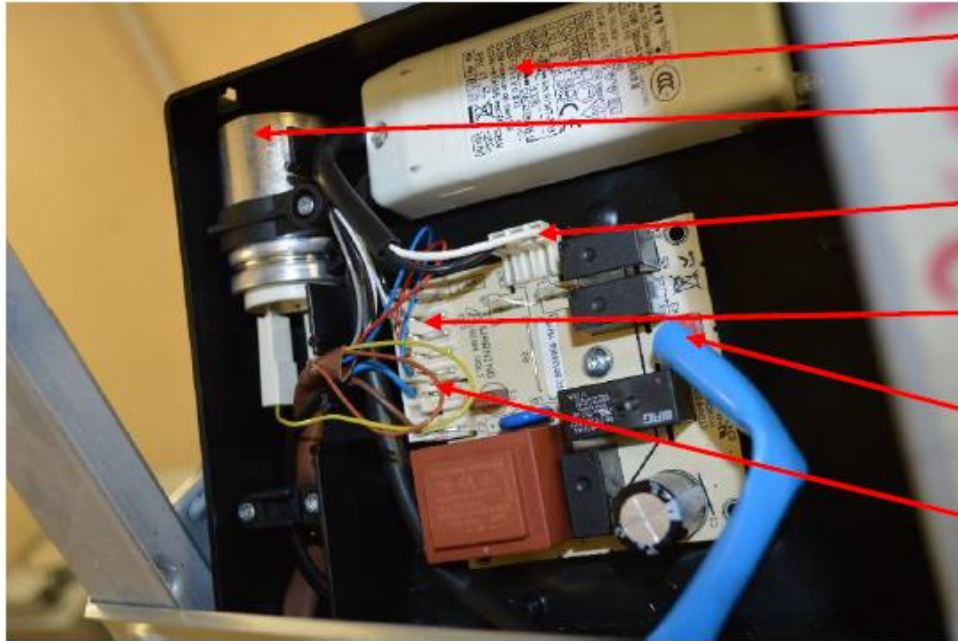


HOW TO REMOVE USER INTERFACE / COME RIMUOVERE IL COMANDO



Unscrew 4 screws / Rimuovere 4 viti

HOW TO REMOVE ELECTRONIC DEVICE / COME RIMUOVERE L'ELETTRONICA



Transformer Light

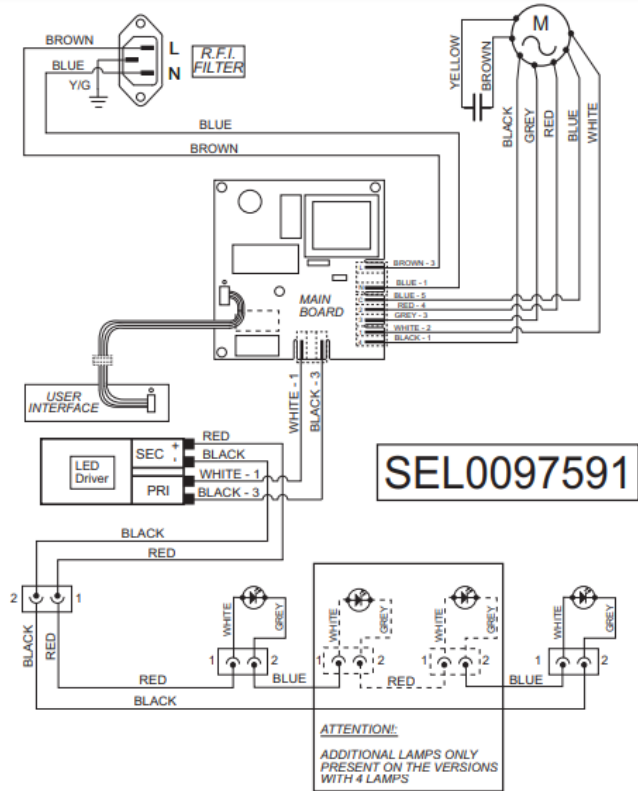
Capacitor

Illumination Power
Out-Put 230V

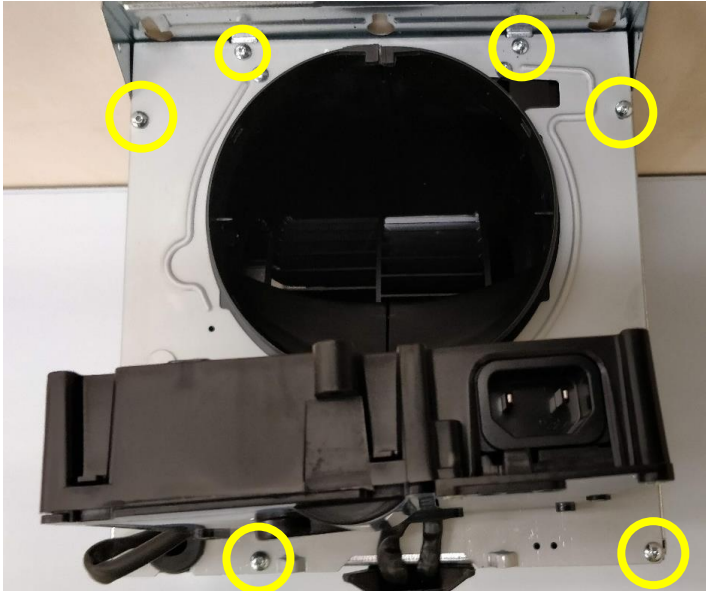
Connector Motor In-
Put 230V

Connector User
Interface Out-Put 5V

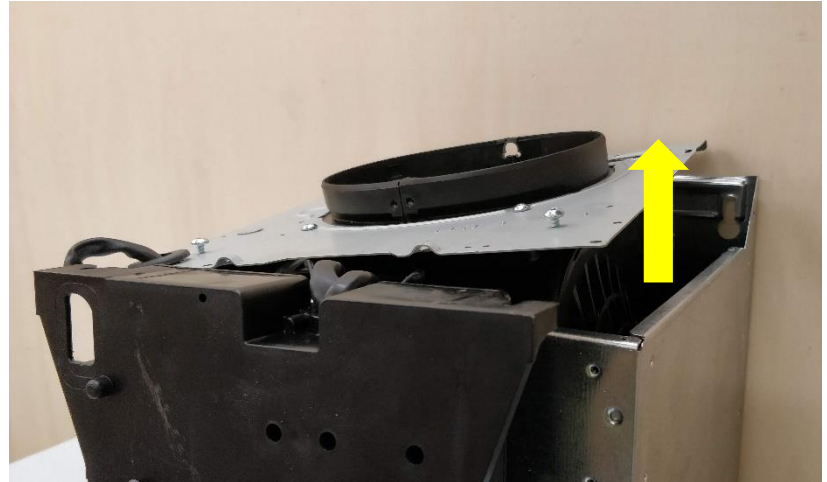
Power Supply
Mainboard 230V



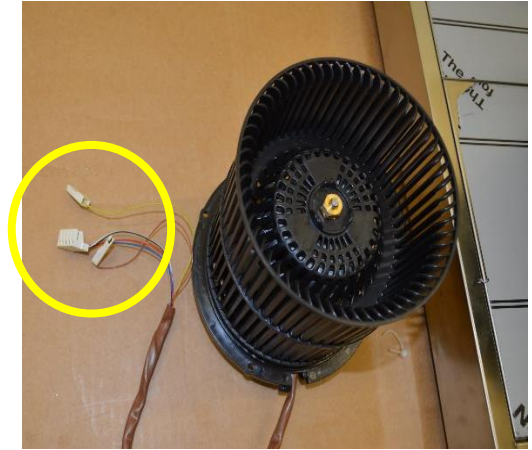
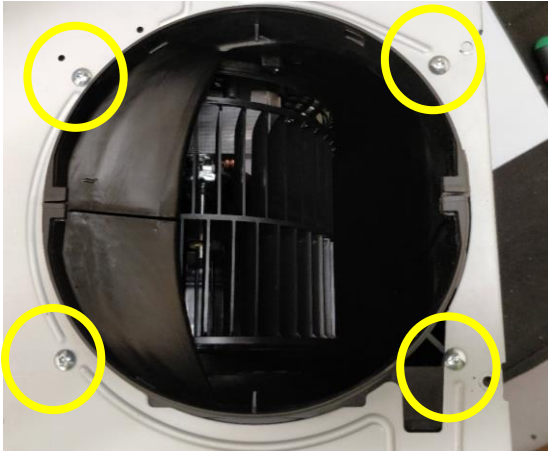
HOW TO REMOVE MOTOR / COME RIMUOVERE IL MOTORE



Unscrew all perimeter screws and lift up the superior panel / Rimuovere le viti perimetrali e sfilare il pannello superiore



HOW TO REMOVE MOTOR / COME RIMUOVERE IL MOTORE



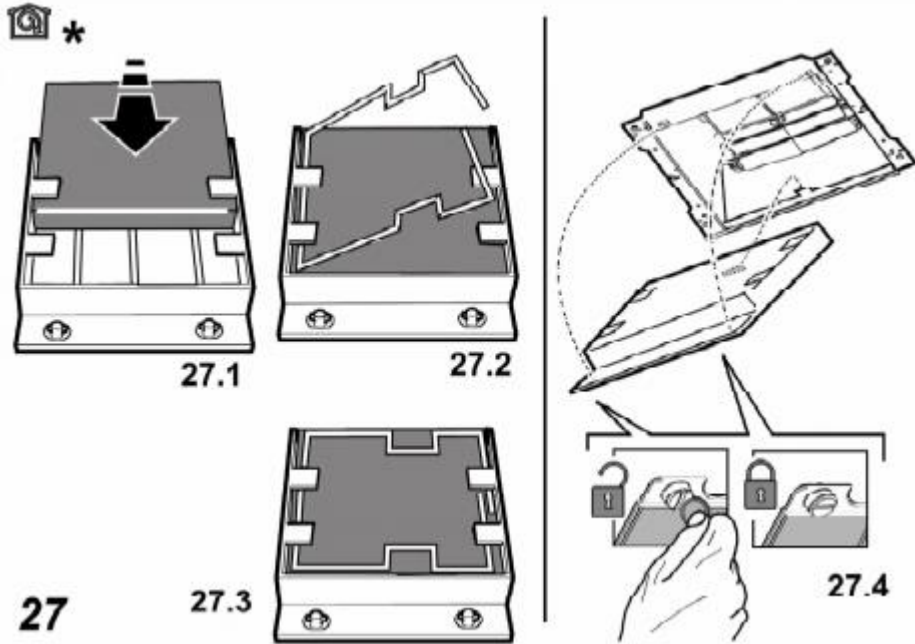
Unscrew 4 external screws to remove panel. Remove 4 conveyor screws to get access with motor and fan wheel. Unhook motor connectors from electronic device / Rimuovere 4 viti esterne per sganciare il pannello. Rimuovere 4 viti del convogliatore per accedere al motore e alla girante. Sganciare i connettori dall'elettronica

HOW TO REMOVE MOTOR / COME RIMUOVERE IL MOTORE



Unscrew fan wheel and motor from support /
Svitare la girante e il motore dal supporto

FILTERING VERSION / VERSIONE FILTRANTE





elica

MetLife

WORLDWIDE