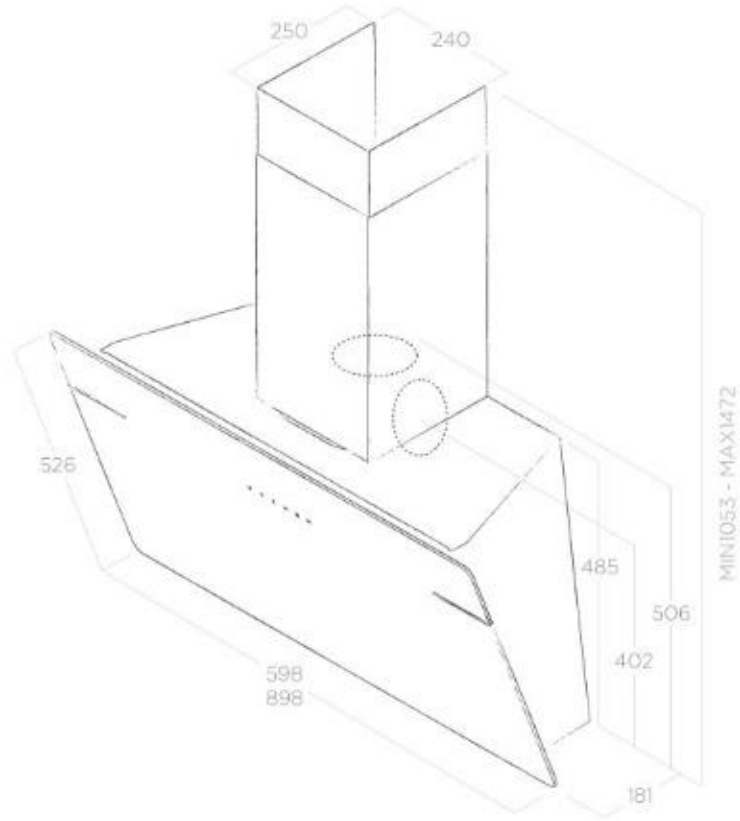
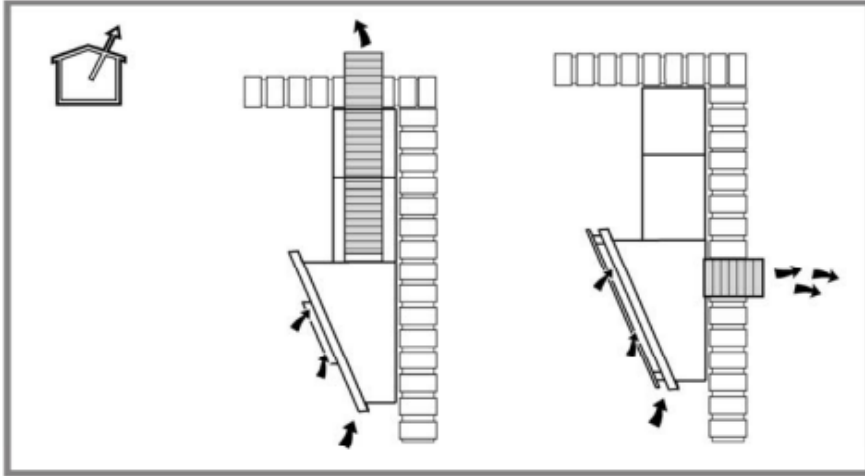




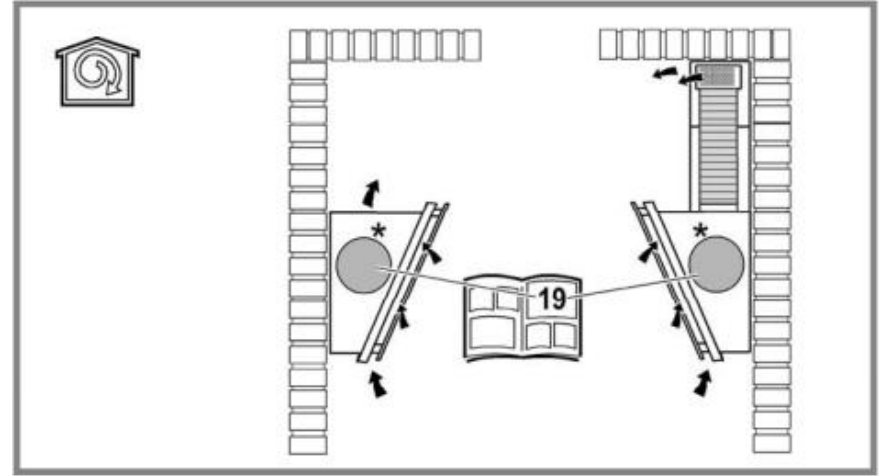
# SERVICE MANUAL L'ESSENZA

SM2000039





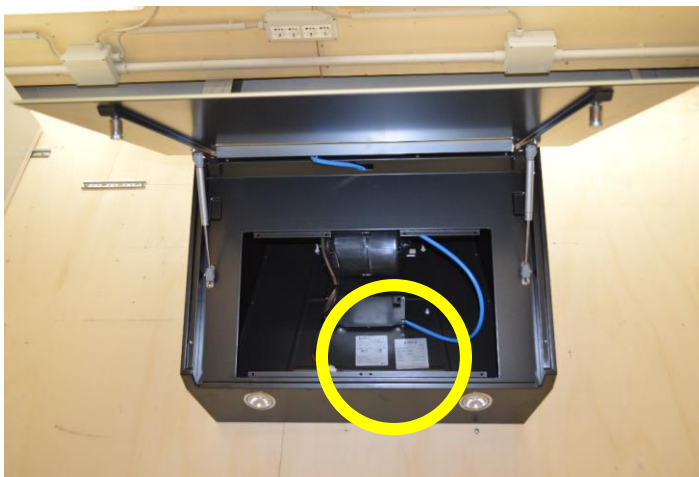
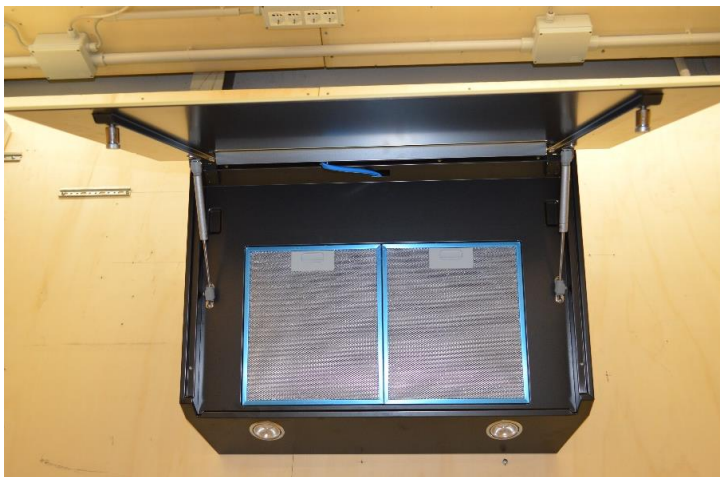
Duct Out version: with chimneys or with back aspiration / Versione aspirante: con camini o con back aspiration



Filtering version: with chimneys or without them / Versione filtrante: con o senza camini

Installation video: <https://youtu.be/-vq0U4xIli8>

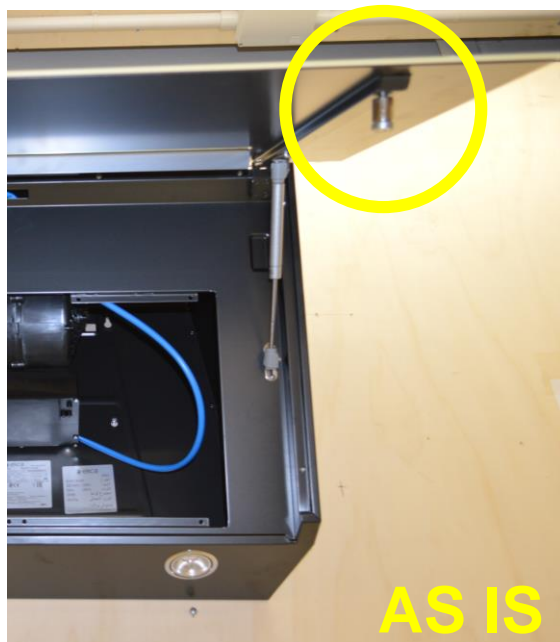
## HOW TO REMOVE FRONT PANEL / COME RIMUOVERE IL PANNELLO FRONTALE



Remove grease filter and disconnect UI connector. Inside product it's possible to verify product labels and I2NC /

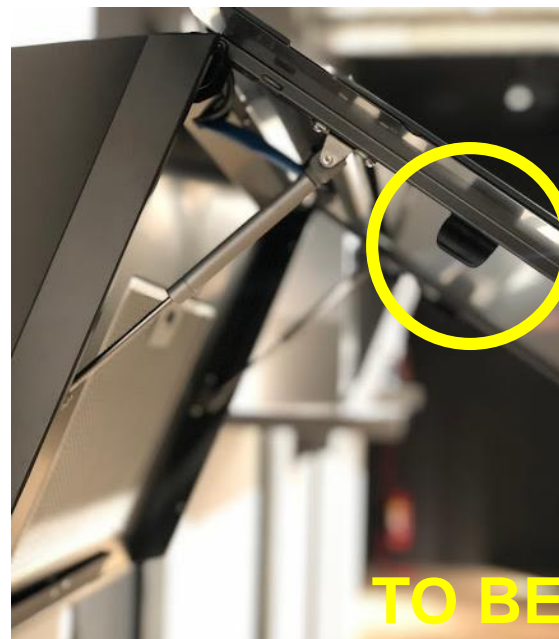
Rimuovere filtri grassi e disconnettere il connettore del comando. All'interno del prodotto è possibile verificare le etichette del prodotto e il I2NC

## DIFFERENT VERSIONS OF PANEL / DIVERSE VERSIONI DI PANNELLO



OLD VERSION (before week 10 of 2019) / Vecchia versione  
(prima della settimana 10 del 2019)

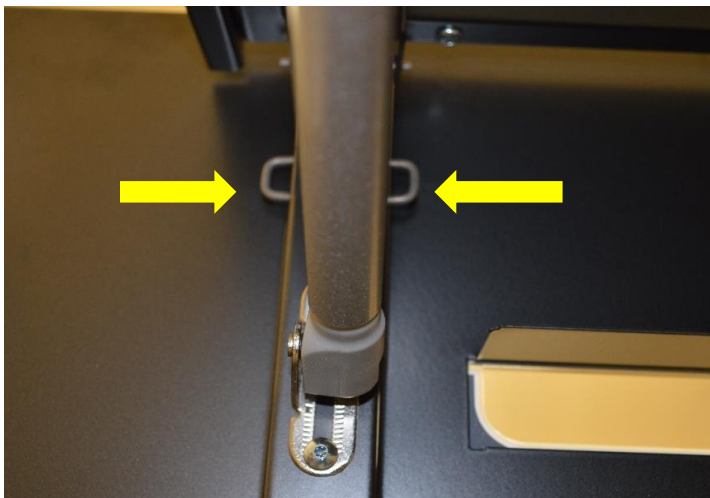
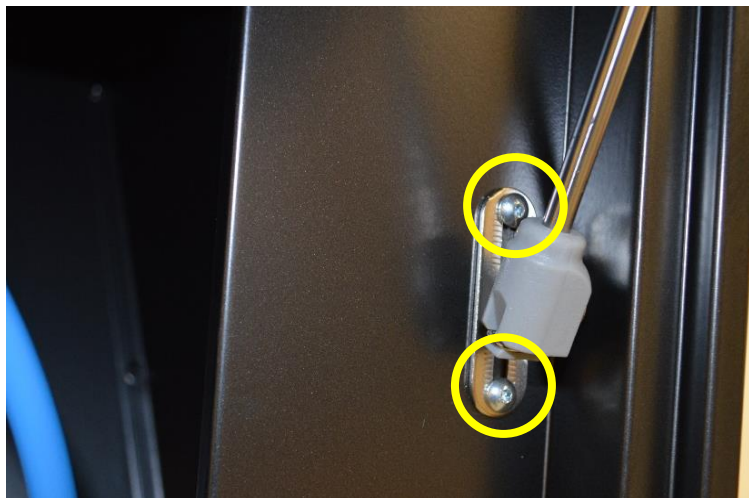
MAGNETIC LATCHES – INSERTI MAGNETICI



NEW VERSION (after week 10 of 2019) / Nuova  
versione (dopo la settimana 10 del 2019)

PLASTIC HOOKS – GANCI IN PLASTICA

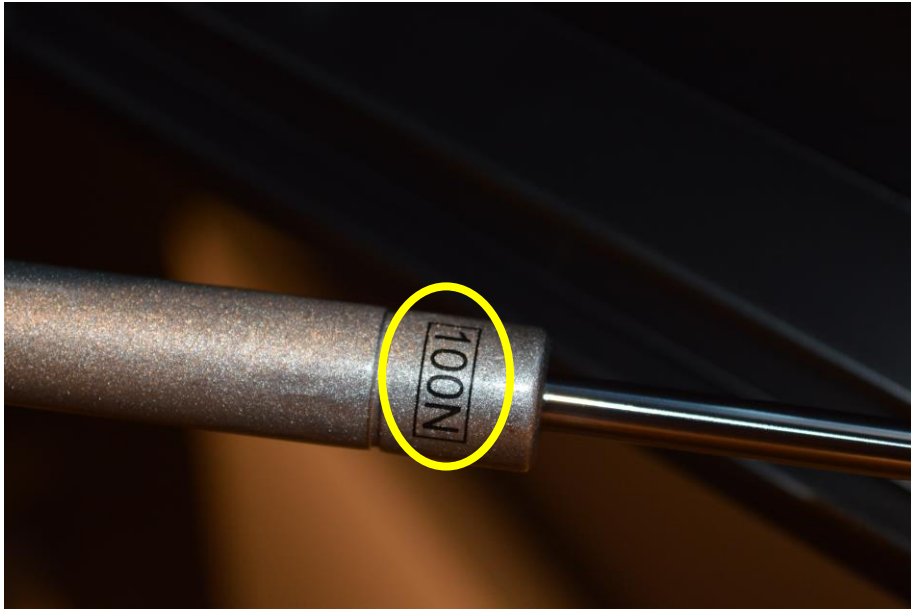
## HOW TO REMOVE FRONT PANEL / COME RIMUOVERE IL PANNELLO FRONTALE



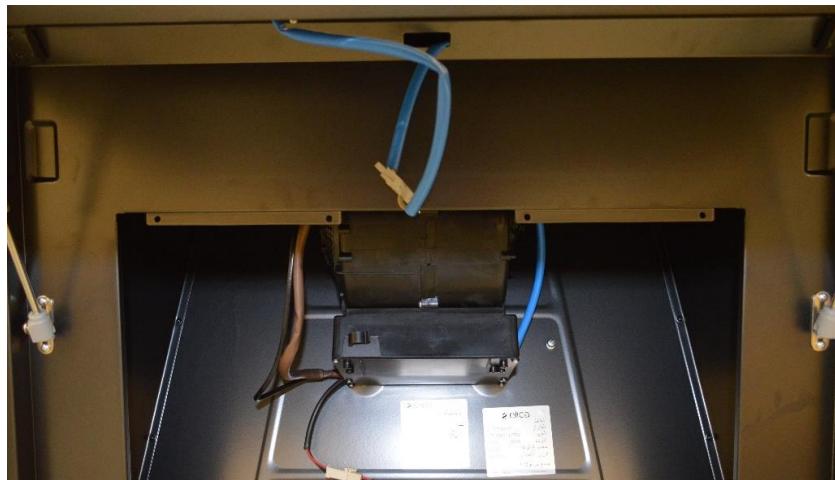
Unscrew n.2 screws for each piston to remove it. Remove the panel by pressing the springs. Attention: when replace front panel check the force in N , replace with the same force otherwise the panel could fall /

Rimuovere le 2 viti per ogni pistone per rimuoverli. Rimuovi il pannello facendo pressione sulle molle laterali. Attenzione: quando si sostituisce il pannello frontale è necessario fare attenzione alla forza in N dei pistoni, sostituire con pannelli di stessa forza per evitare che il pannello cada

## HOW TO REMOVE FRONT PANEL / COME RIMUOVERE IL PANNELLO FRONTALE



## HOW TO REMOVE UI / COME RIMUOVERE IL COMANDO

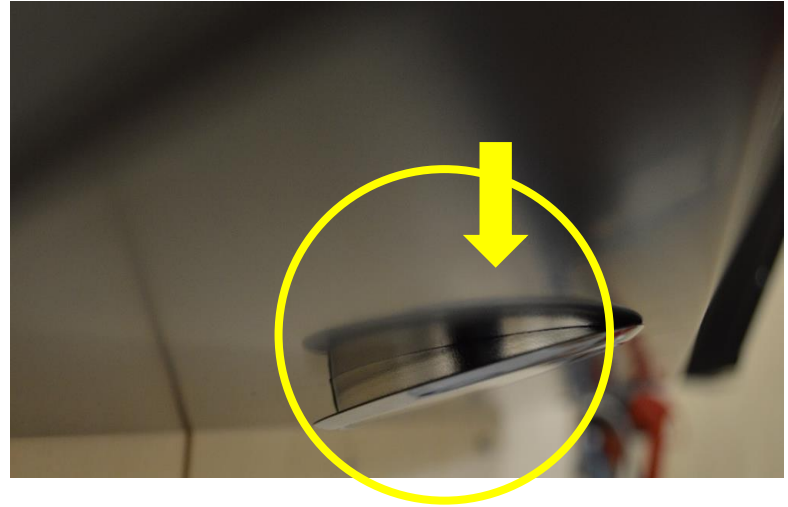
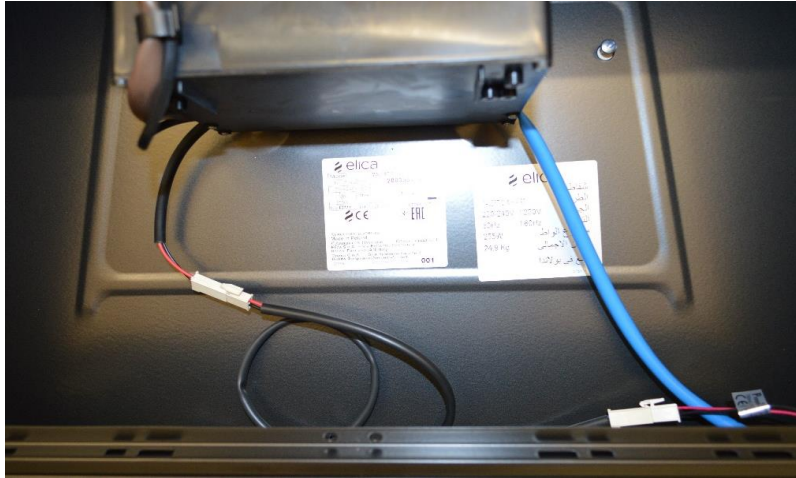


Disconnect UI connection, and unscrew n.2 screws. After that it's possible to get access with and replace the UI. / Disconnettere il connettore dell'UI e rimuovere le 2 viti. Dopodichè è possibile accedere e sostituire l'UI



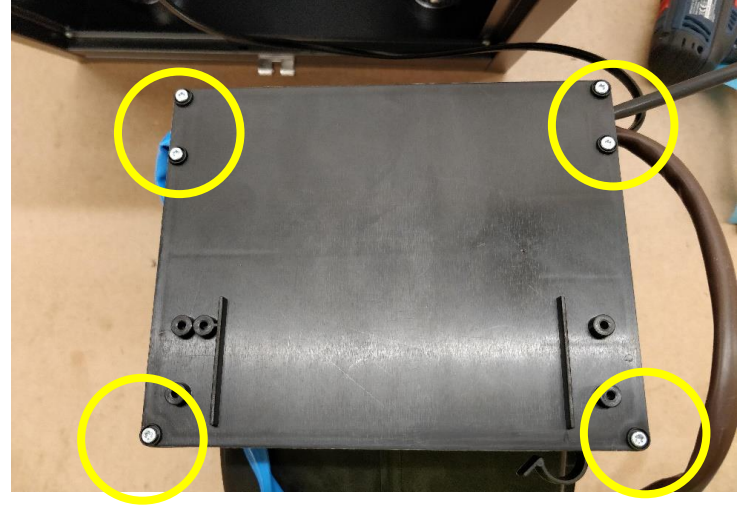
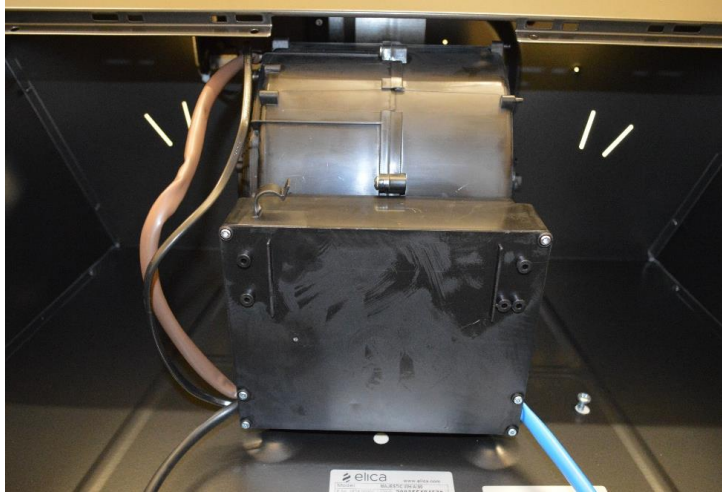


## HOW TO REMOVE ILLUMINATION / COME RIMUOVERE L'ILLUMINAZIONE

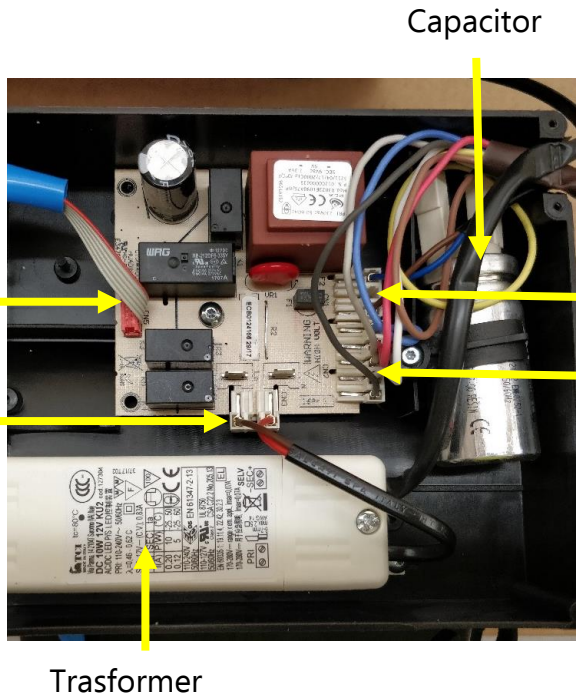


Disconnect the lamp connection, press the lateral lamp springs and push the lamp down to remove it / Disconnettere le connessioni delle lampade, premere le molle delle lampade lateralmente e spingere la lampada fuori dalla sua sede

## HOW TO REMOVE ELECTRONIC DEVICE / COME RIMUOVERE L'ELETTRONICA



Unscrew n. 6 screws to open electronic box / Rimuovere le 6 viti per aprire la scatola elettronica

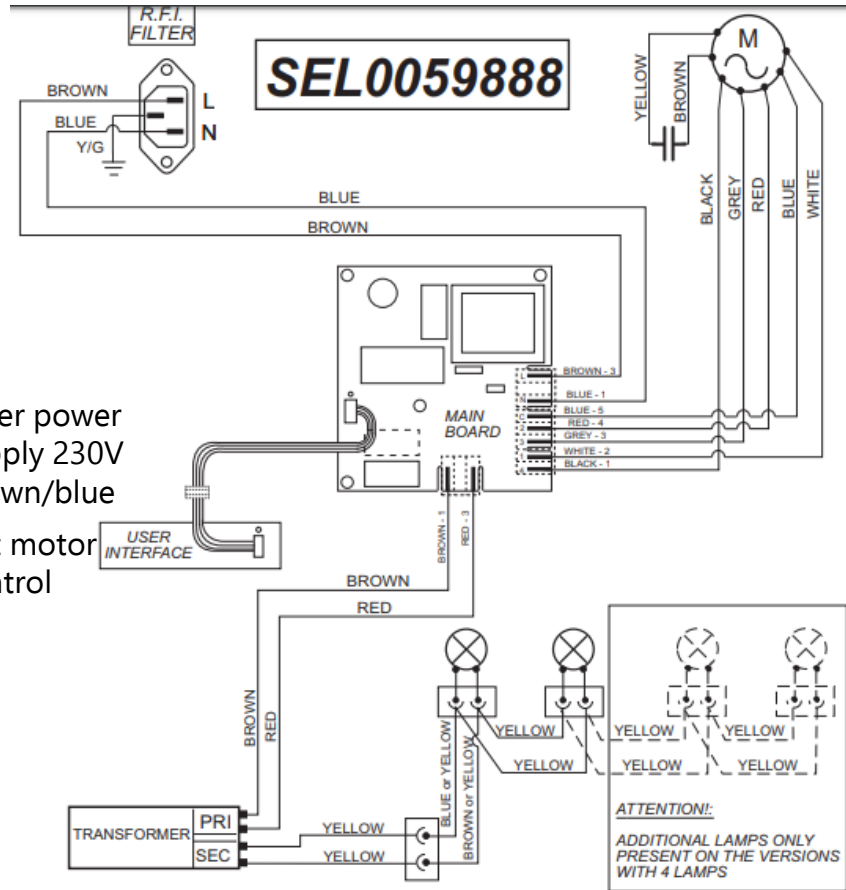


UI connection

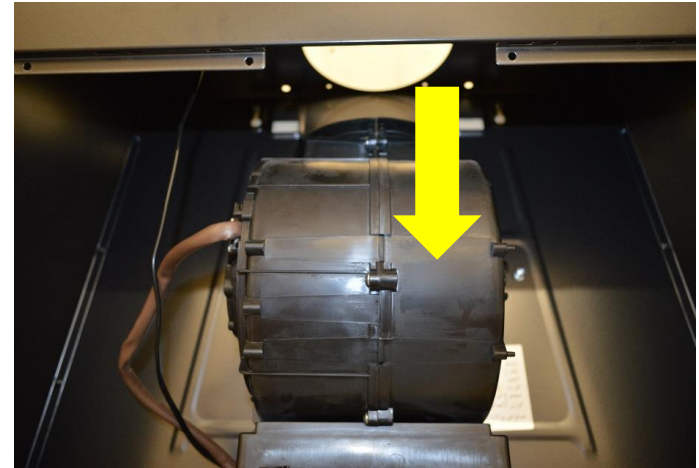
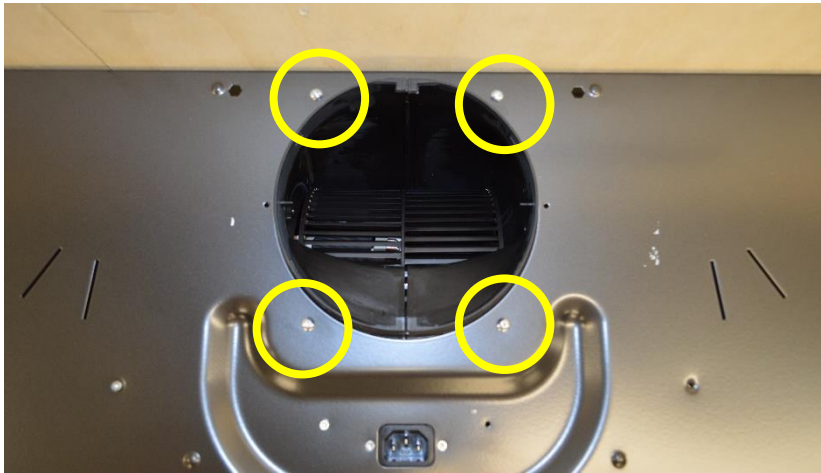
Illumination connection 230V

Trasformer

Capacitor



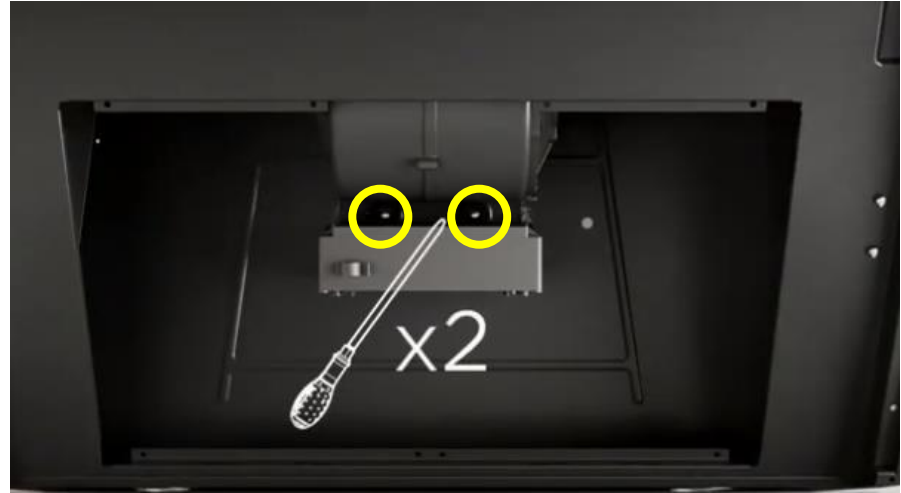
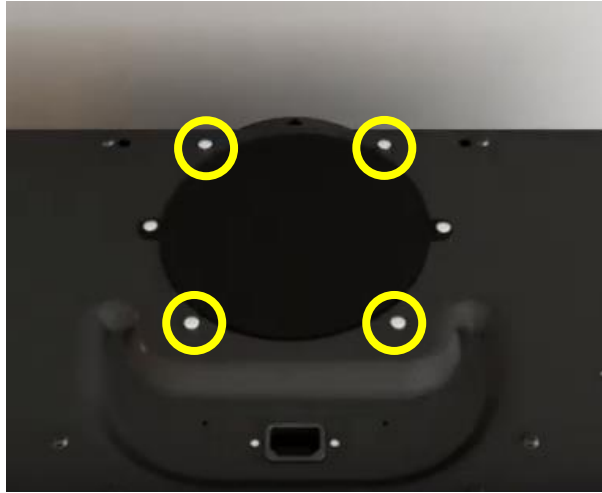
## HOW TO REMOVE MOTOR / COME RIMUOVERE IL MOTORE



In case of upper exit, unscrew 4 superior screws. / in caso di uscita superiore, rimuovere le 4 viti

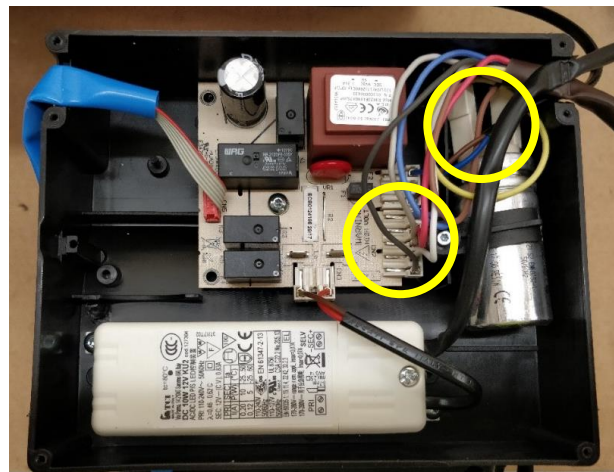
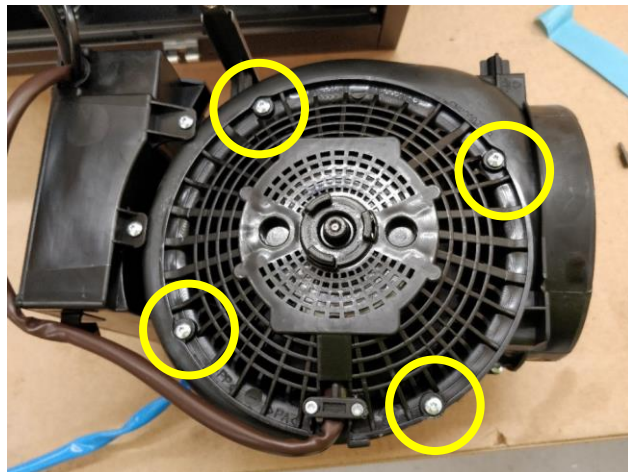
**ATTENTION: PLEASE HOLD THE CONVEYOR, IT WILL DROP DOWN / ATTENZIONE: MANTENERE IL CONVOGLIATORE PER NON FARLO CADERE**

## HOW TO REMOVE MOTOR / COME RIMUOVERE IL MOTORE



In case of back aspiration, remove 4 superior screws and 2 inside the product / In caso di back aspiration rimuovere le 4 viti superiori e le 2 viti interne

## HOW TO REMOVE MOTOR / COME RIMUOVERE IL MOTORE



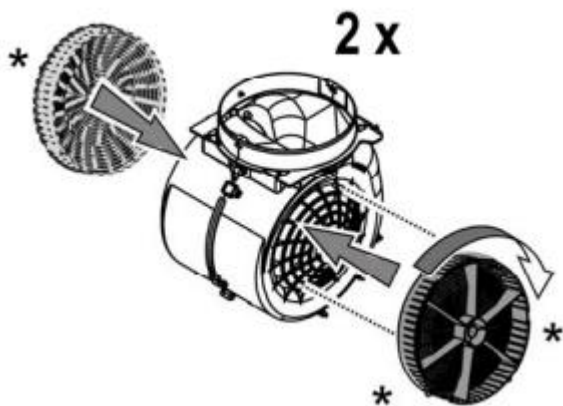
Unscrew 4 screws. Disconnect motor connection from Main board and from capacitor. Unscrew the nut to set free the impeller / Rimuovere le 4 viti del convogliatore. Disconnettere le connessioni del motore sulla scheda elettronica e dal condensatore. Allentare il dado per rimuovere la girante

## HOW TO REMOVE MOTOR / COME RIMUOVERE IL MOTORE



Unscrew 4 fixing screws and replace motor / Rimuovere le 4 viti e sostituire il motore

## FILTERING VERSION / VERSIONE FILTRANTE



**Circular charcoal filter:** apply one on each side as cover to both the shield grids of the motor impeller, then turn clockwise. For the disassembly, turn counter-clockwise /

**Filtro al carbone circolare:** applicarne uno per lato a copertura di entrambe le griglie di protezione della girante del motore, dopodichè girare in senso orario. Per lo smontaggio girare in senso antiorario.





 elica

The image features a high-angle, wide shot of a city skyline, likely New York City, with the Empire State Building as a prominent central landmark. The scene is overlaid with a complex geometric pattern of large, semi-transparent triangles in shades of red and blue. The color gradient transitions from a deep red on the left to a vibrant blue on the right. The 'Elica' logo, consisting of a stylized symbol and the word 'elica' in a lowercase sans-serif font, is centered in the upper half of the image.

MetLife

WORLDWIDE