

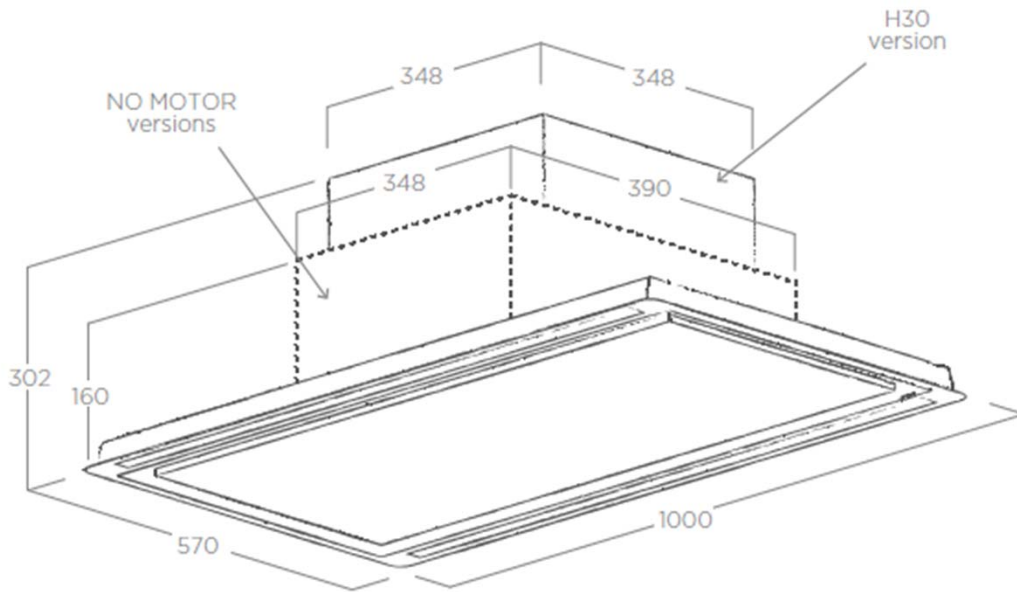


SERVICE MANUAL HILIGHT H30

SM2000021

SERVICE MANUAL HILIGHT

Product presentation / presentazione prodotto



IN CASE OF DISINSTALLATION AND INSTALLATION OF THIS PRODUCT / IN CASO DI DISINSTALLAZIONE E INSTALLAZIONE DI QUESTO PRODOTTO



SERVICE MANUAL HILIGHT

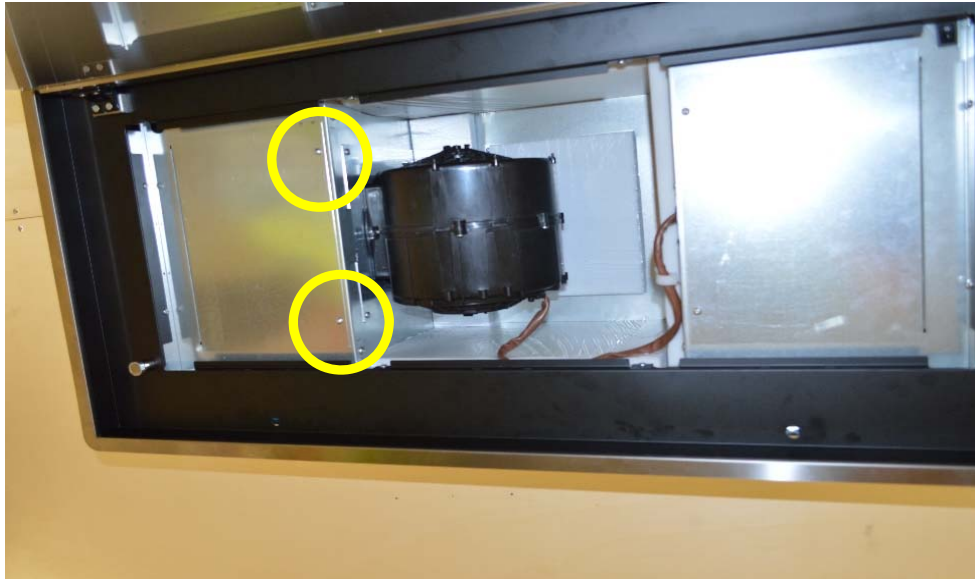
HOW TO REMOVE ILLUMINATION PANEL / COME RIMUOVERE L'ILLUMINAZIONE



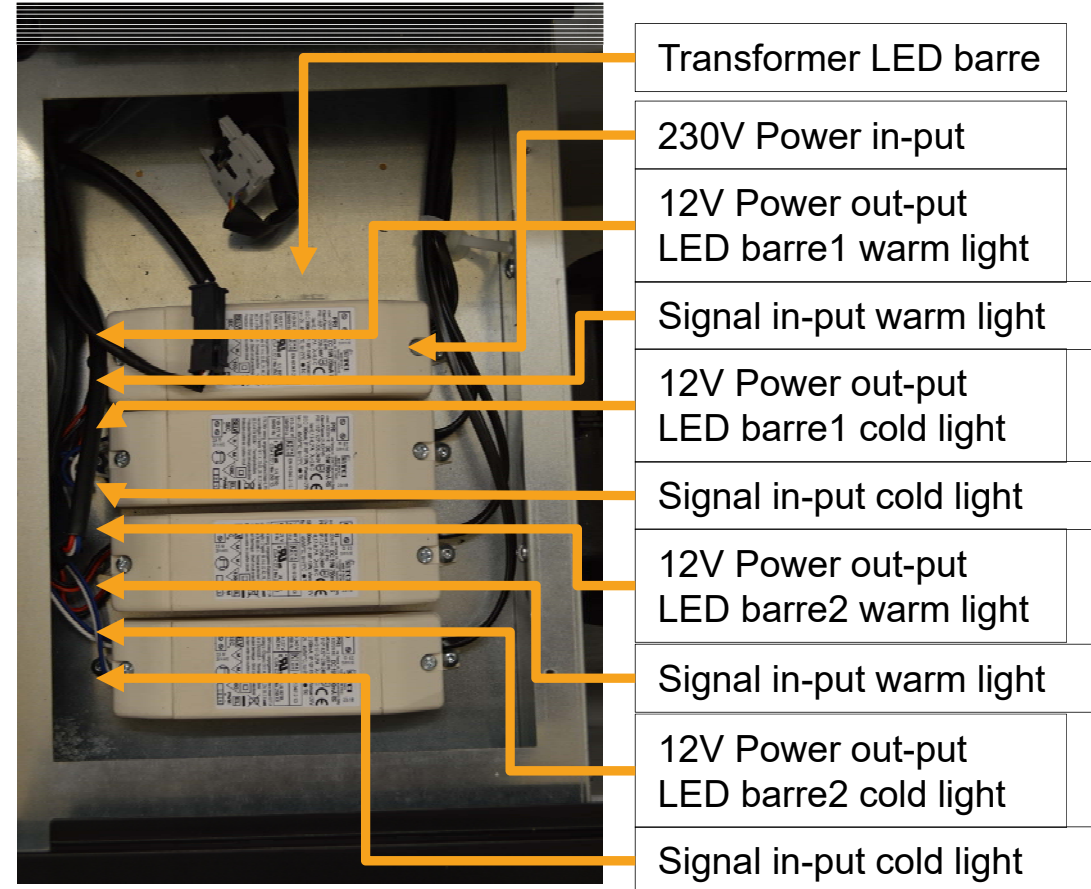
Lift up the LED bar using a screwdriver. ATTENTION: BE CAREFULLY TO NOT DAMAGE THE FRAME.
Disconnect the LED bar connection in order to replace it / Sollevare la barra LED con un cacciavite.
ATTENZIONE:NON DANNEGGIARE IL TELAIO. Disconnettere il cablaggio della lampada LED

SERVICE MANUAL HILIGHT

HOW TO REMOVE ILLUMINATION PANEL / COME RIMUOVERE L'ILLUMINAZIONE



Remove 2 screws to get access to transformers /
rimuovere le 2 viti per accedere ai trasformatori



SERVICE MANUAL HIGHLIGHT

HOW TO REMOVE ELECTRONIC DEVICE/ COME RIMUOVERE L'ELETTRONICA



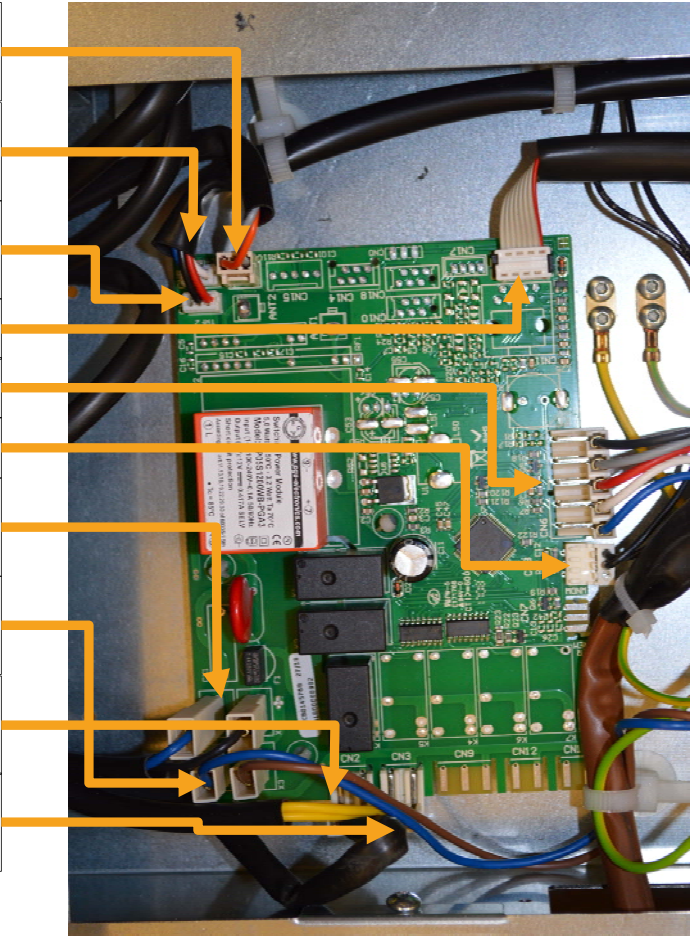
Unscrew 2 fixing screws of electronic device cover to get access to LED connection. In this model there is a on-off switch / Svitare n. 2 viti di fissaggio del coperchio del dispositivo elettronico per accedere alla connessione LED. In questo modello è presente un interruttore on-off

SERVICE MANUAL HILIGHT

HOW TO REMOVE ELECTRONIC DEVICE/ COME RIMUOVERE L'ELETTRONICA

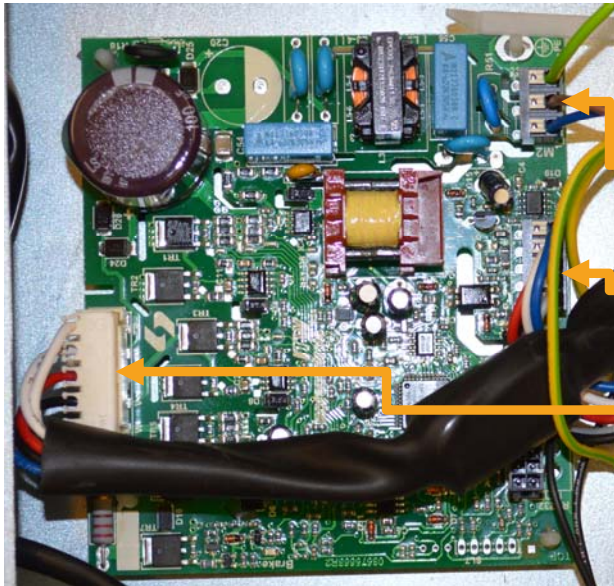


Exit Dimmer AUX illumination grey/orange
Out-put signal dimmer LED light cold white/blue
Out-put signal dimmer LED light warm red/black
Exit UI RFI board 5V
Speed control Motor 230V
Windows Switch
Power In-put 230V Mainboard black/blue
Power Out-put 230V BLDC Motor brown/blue
Power Out-put 230V Transformer brown/red
Power Out-put 230V Illumination AUX yellow/yellow



SERVICE MANUAL HILIGHT

HOW TO REMOVE ELECTRONIC DEVICE/ COME RIMUOVERE L'ELETTRONICA

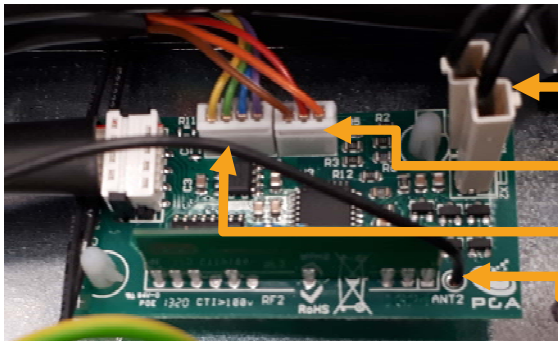


BLDC Board Motor

Power Supply In-put 230
BLDC board Motor

Entrance controller BLDC
board Motor

Out-Put controller BLDC
board Motor



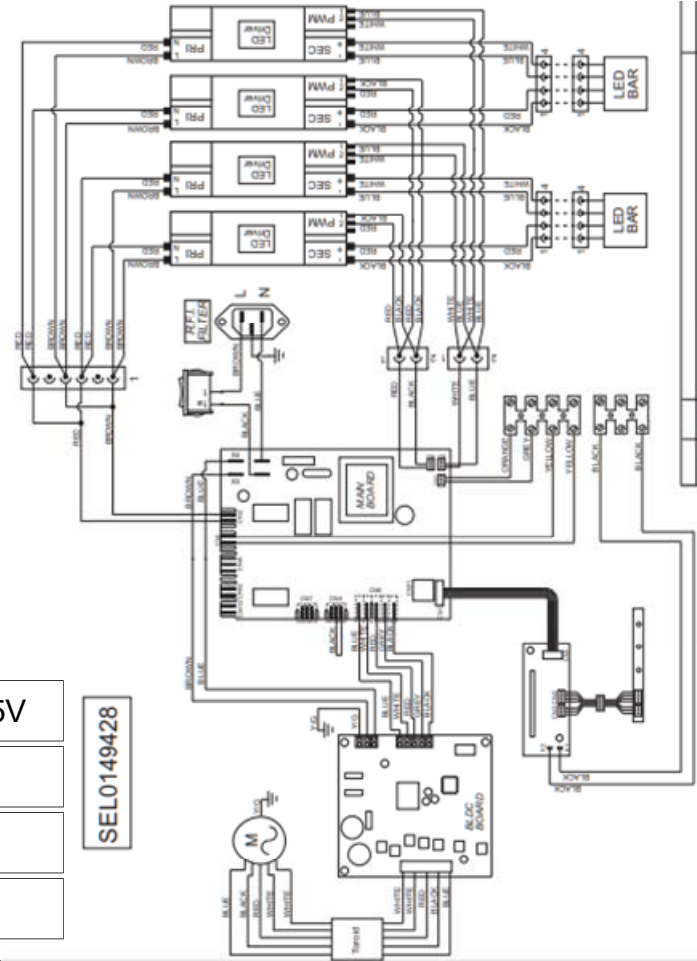
RFI Board

Second exit AUX lamps control 5V

Entrance UI Remote Control 5V

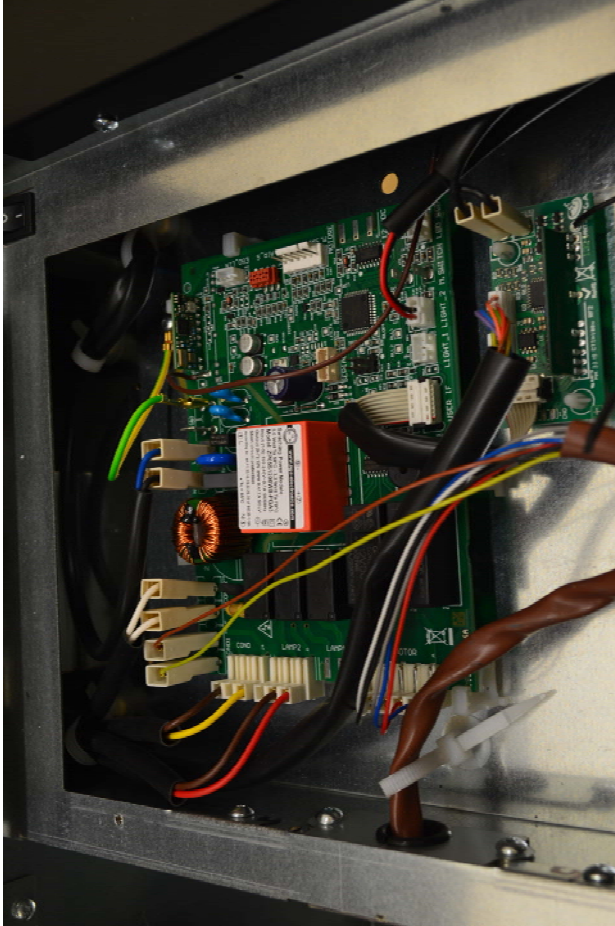
Exit UI LED Display 5V

Antenna RFI

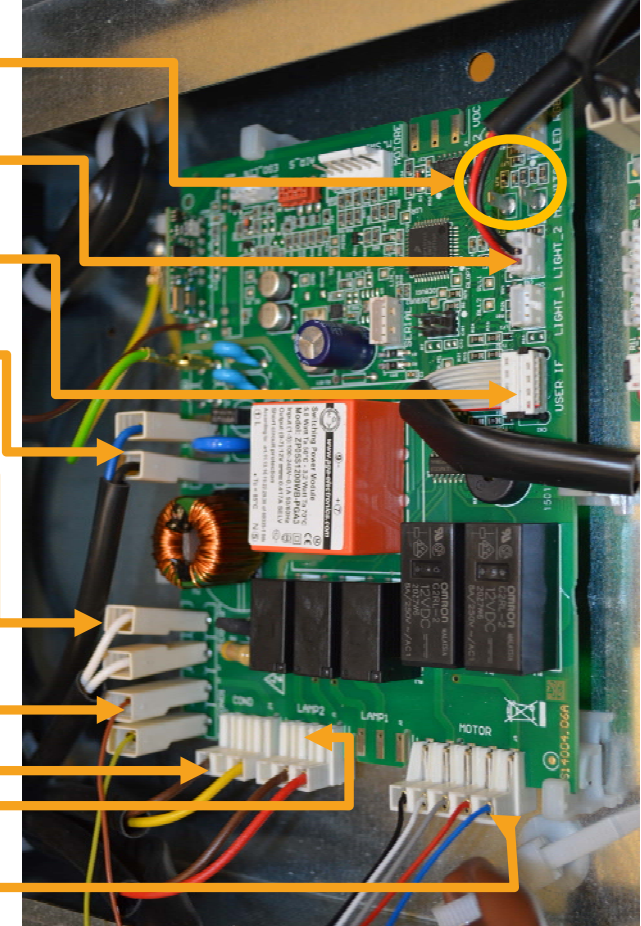


SERVICE MANUAL HILIGHT X

HOW TO REMOVE ELECTRONIC DEVICE/ COME RIMUOVERE L'ELETTRONICA



- Windows Switch
- Out-put signal dimmer LED red/black
- Exit UI RFI board 5V
- Power In-put 230V Mainboard black/blue
- Capacitor primary speed control white/white
- In-put Capacitor Motor brown/yellow
- Out-put Capacitor Motor brown/yellow
- Power Out-put 230V Transformer red/brown
- Power Out-put 230V Motor



SERVICE MANUAL HILIGHT X

HOW TO REMOVE ELECTRONIC DEVICE/ COME RIMUOVERE L'ELETTRONICA



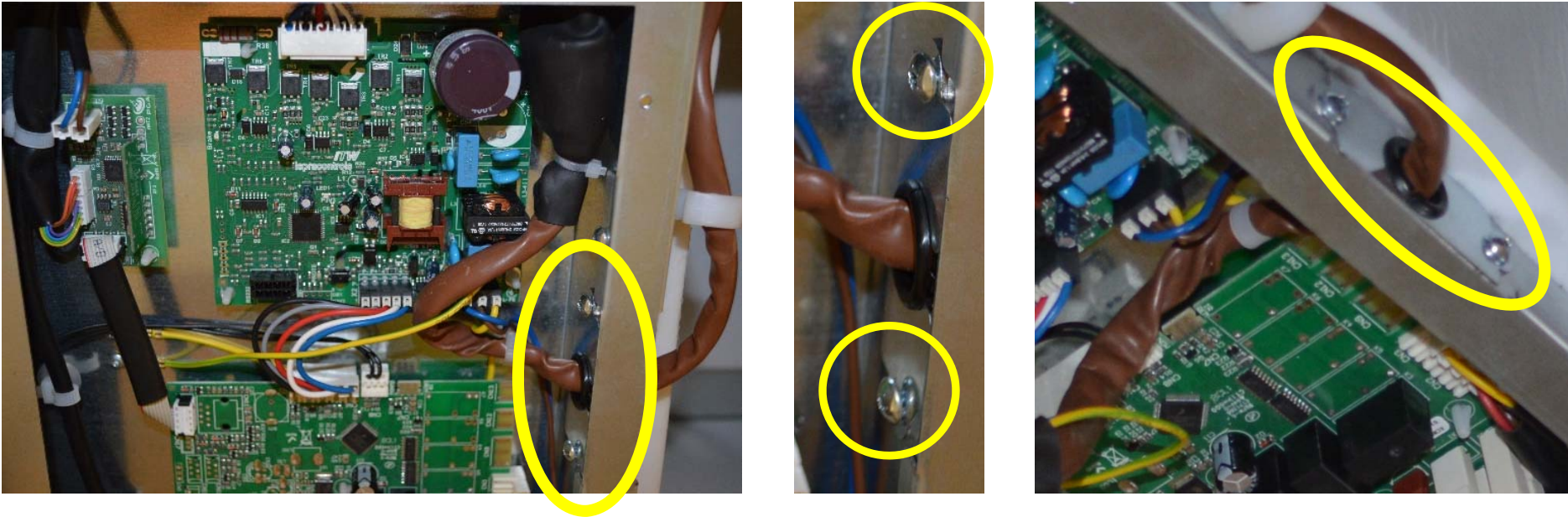
Capacitor primary speed control white/white

Power In-put 230V Transformer red/brown

Capacitor Motor brown/yellow

SERVICE MANUAL HILIGHT

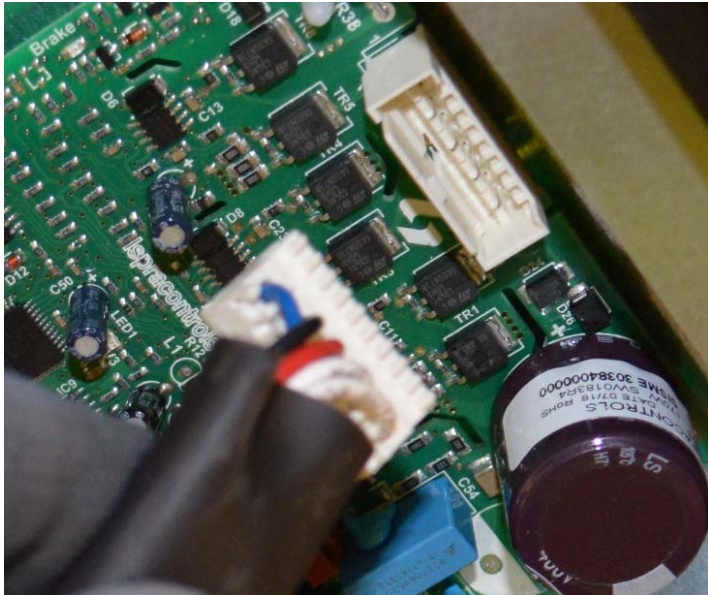
HOW TO REMOVE MOTOR / COME RIMUOVERE IL MOTORE



Remove internal protection bracket, unscrewing 2 screws. Remove external protection bracket unscrewing 2 screws / rimuovere la staffa di protezione interna, svitando 2 viti. Rimuovere la staffa di protezione esterna svitando 2 viti.

SERVICE MANUAL HIGHLIGHT

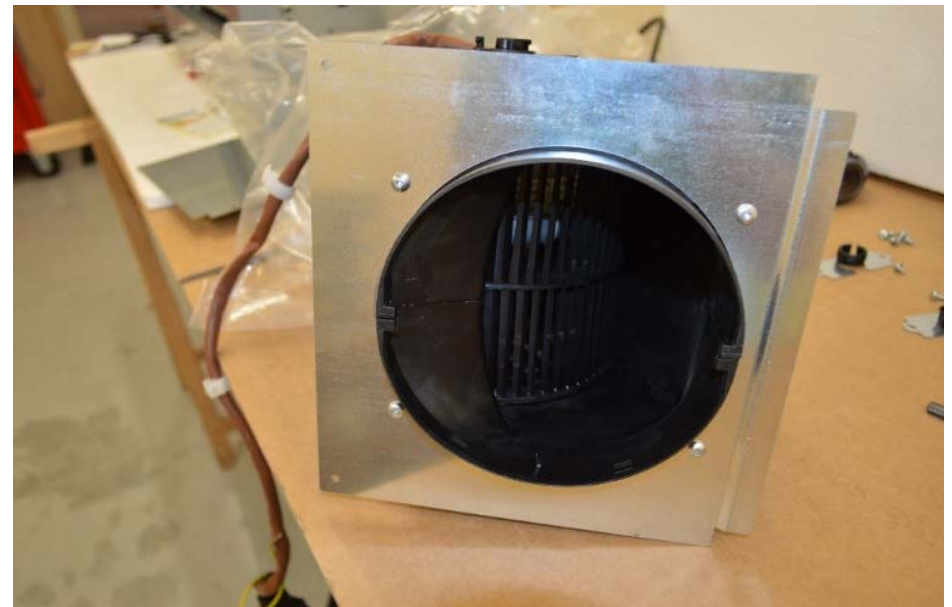
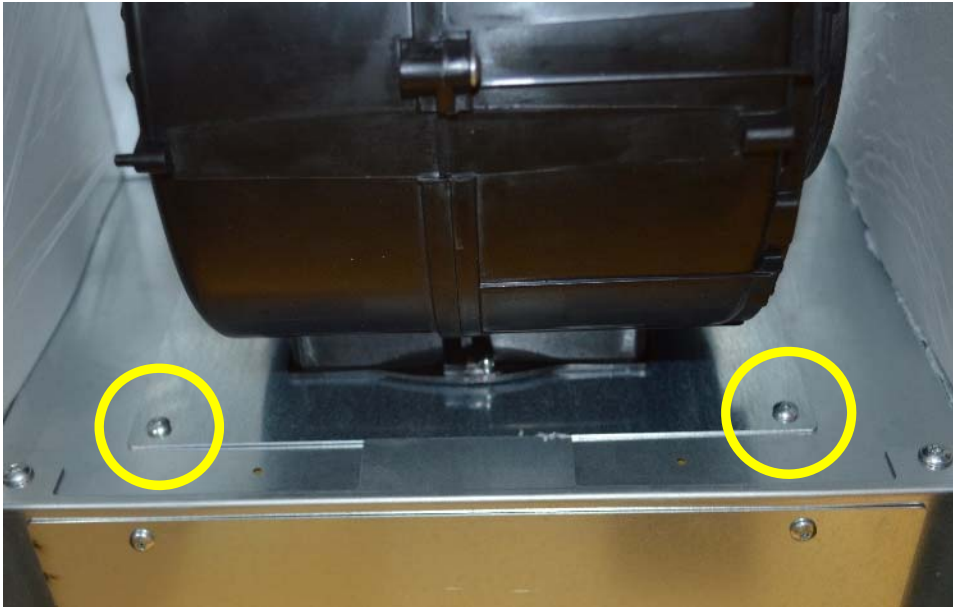
HOW TO REMOVE MOTOR / COME RIMUOVERE IL MOTORE



Disconnect Motor Connector and Disconnect Earth-Connection from Motor wire / disconnettere il connettore del motore e il cablaggio Terra

SERVICE MANUAL HILIGHT

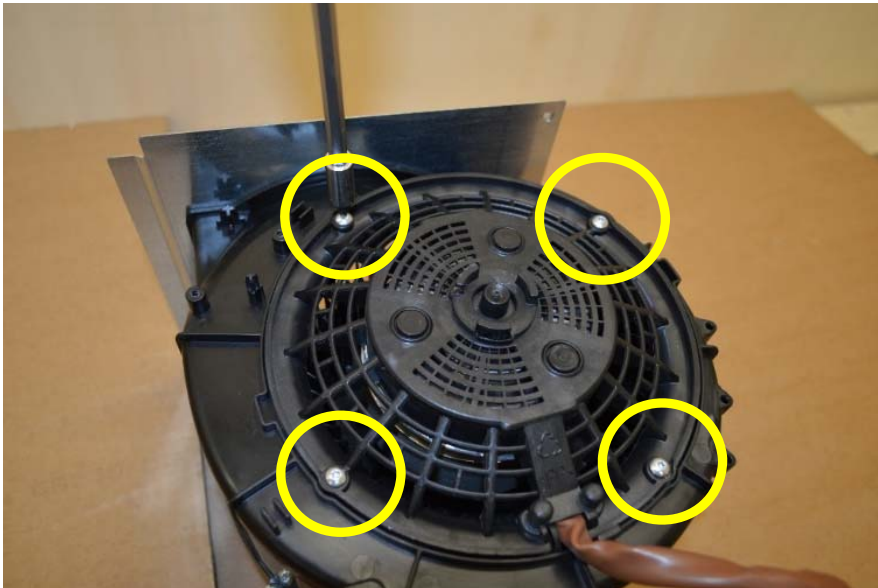
HOW TO REMOVE MOTOR / COME RIMUOVERE IL MOTORE



Remove 2 screws / rimuovere 2 viti

SERVICE MANUAL HILIGHT

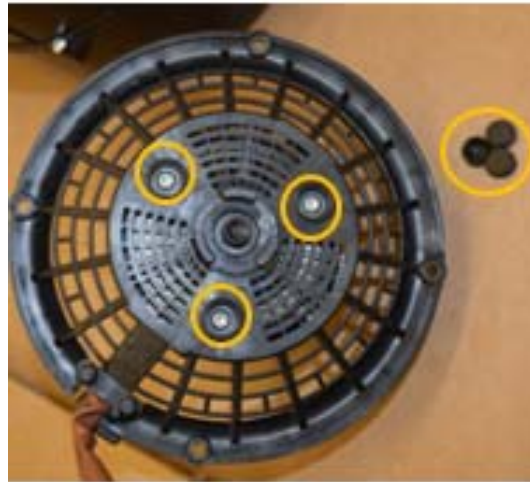
HOW TO REMOVE MOTOR / COME RIMUOVERE IL MOTORE



Unscrew Motor support (4 screws), unscrew fan wheel

SERVICE MANUAL HIGHLIGHT

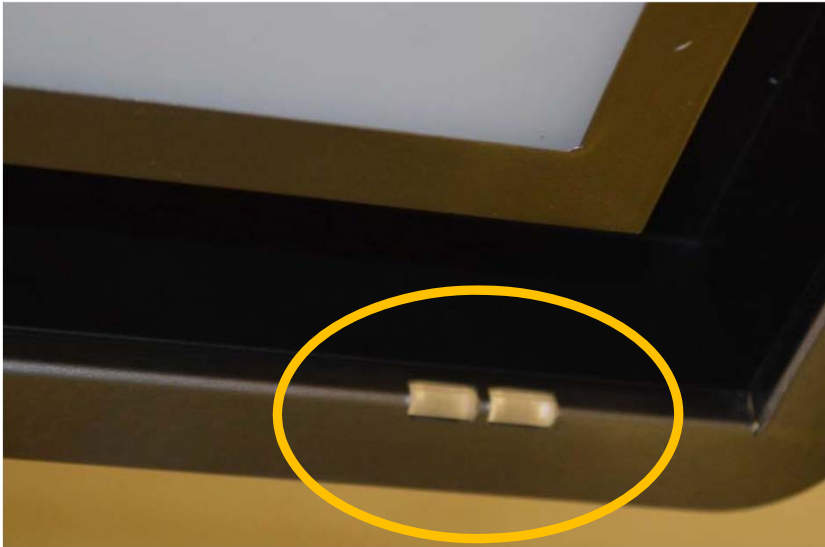
HOW TO REMOVE MOTOR / COME RIMUOVERE IL MOTORE



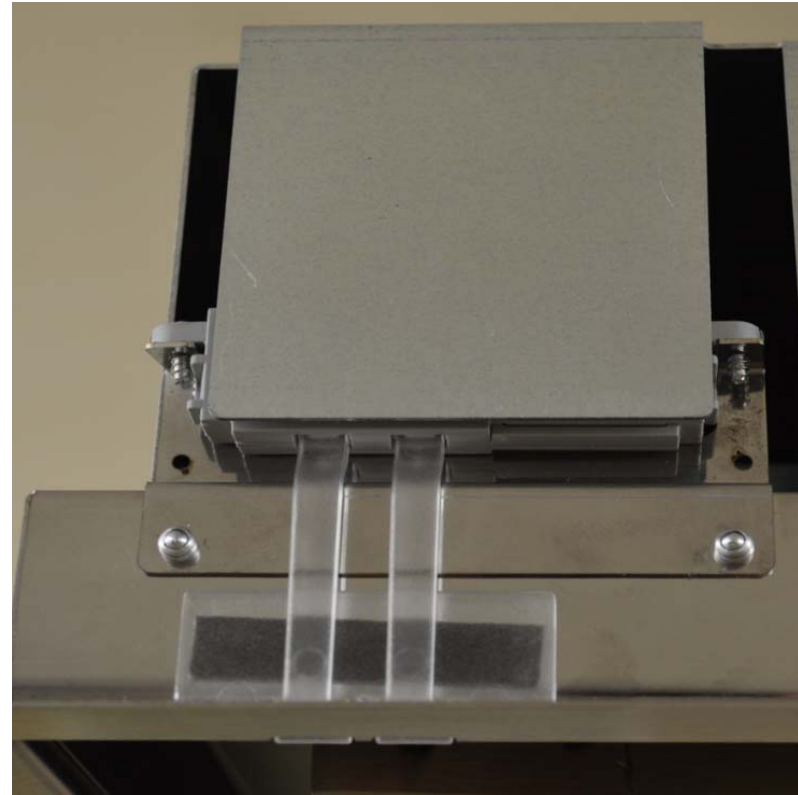
Unscrew Cable-holder, remove Protection cap from Motor support / Svitare il passacavo, rimuovere il cappuccio di protezione dal supporto del motore

SERVICE MANUAL HILIGHT

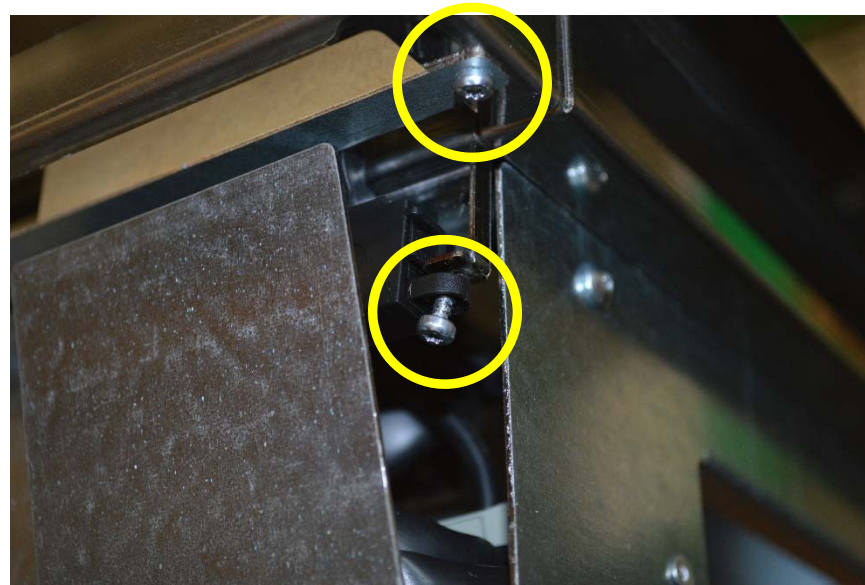
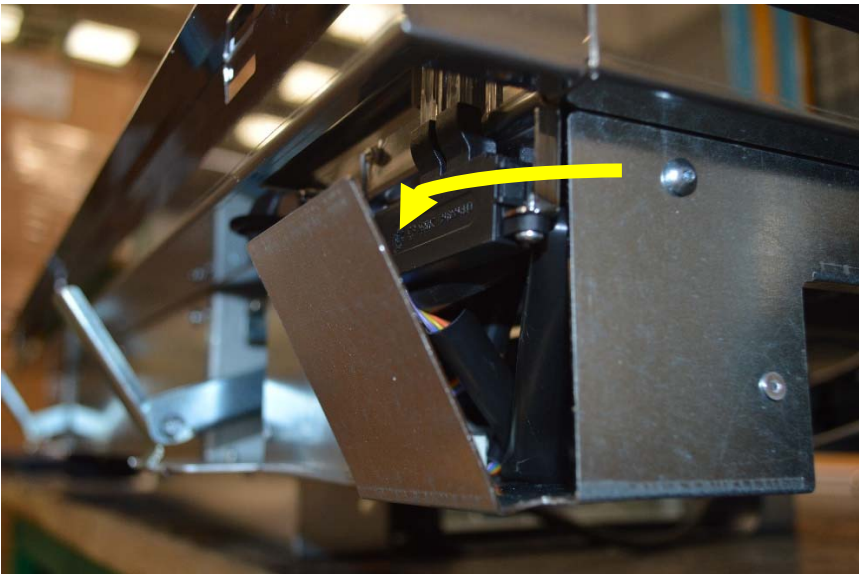
HOW TO REMOVE LED INDICATOR / COME RIMUOVERE L'INDICATORE LED



Attention: To replace the LED indicator the hood must be removed from ceiling / Attenzione: per rimuovere l'indicatore LED è necessario rimuovere la cappa dal controsoffitto



HOW TO REMOVE LED INDICATOR UI / COME RIMUOVERE L'INDICATORE LED UI



Open the metal protection by bending it slightly, after replacement reclose it. Unscrew the light protection and unscrew LED indicator. Disconnect led indicator wiring / Aprire la protezione in metallo piegandola leggermente, dopo averla richiusa richiuderla. Svitare la protezione della luce e svitare l'indicatore LED. Disconnettere il connettore dell'indicatore LED



elica

MetLife