



SERVICE MANUAL ILLUSION H16

SM2000016

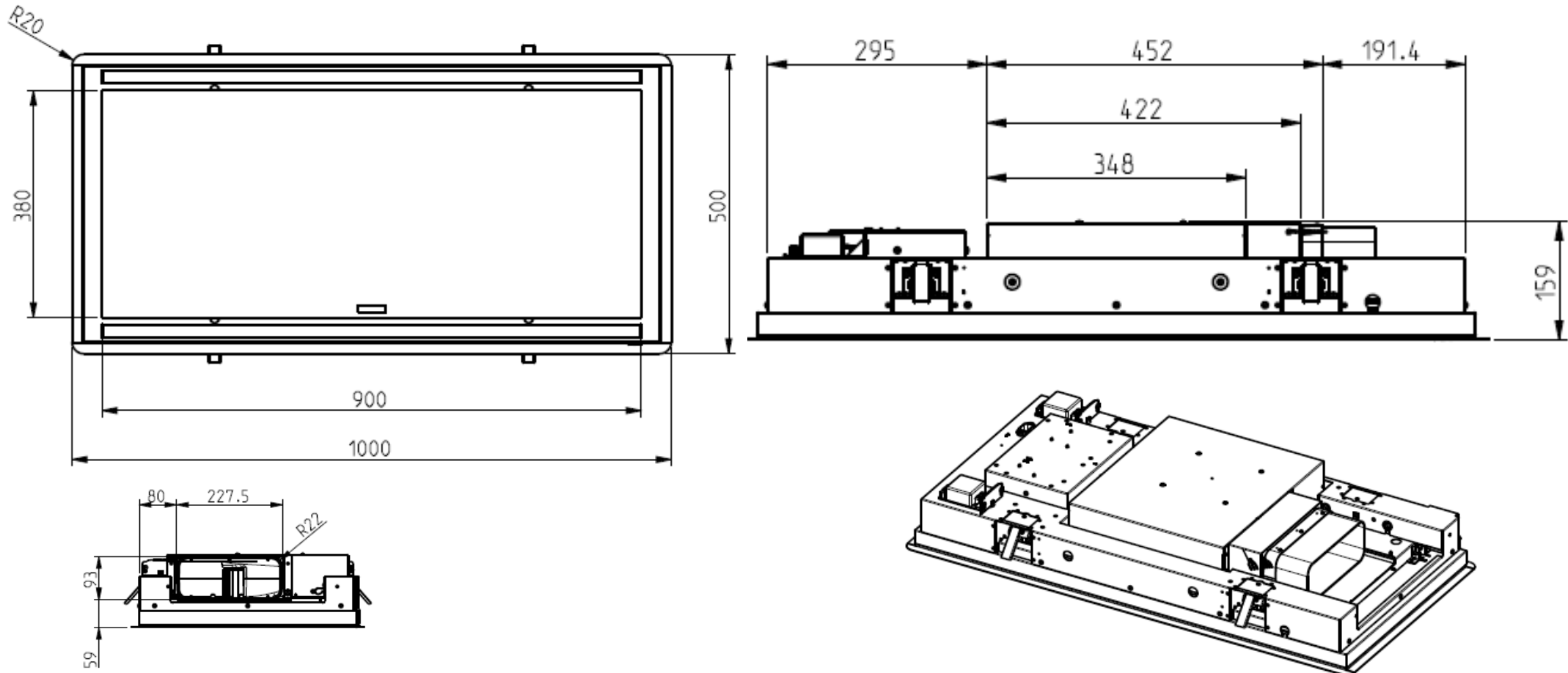
SERVICE MANUAL ILLUSION H16

PRODUCT PRESENTATION / PRESENTAZIONE DEL PRODOTTO



SERVICE MANUAL ILLUSION H16

PRODUCT PRESENTATION / PRESENTAZIONE DEL PRODOTTO



SERVICE MANUAL ILLUSION H16

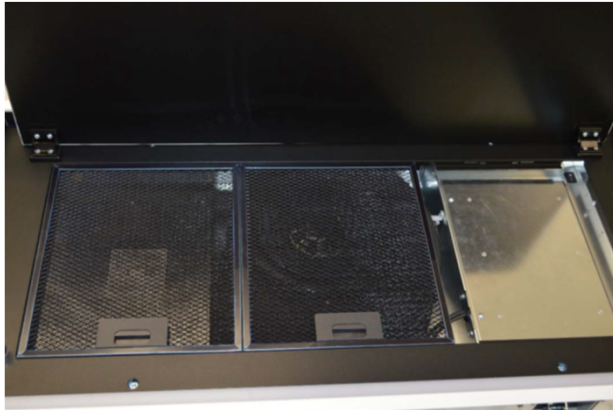
HOW TO REMOVE FRONT PANEL / COME RIMUOVERE IL PANNELLO FRONTALE



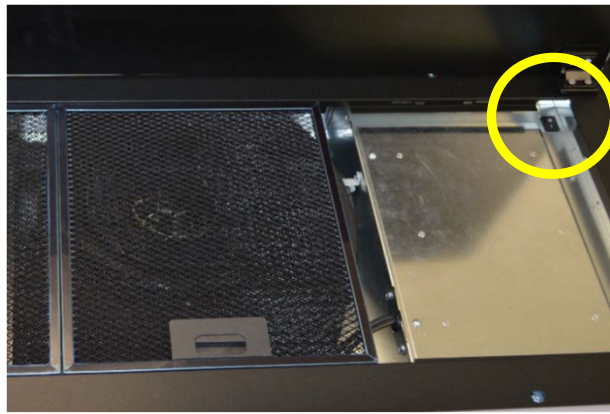
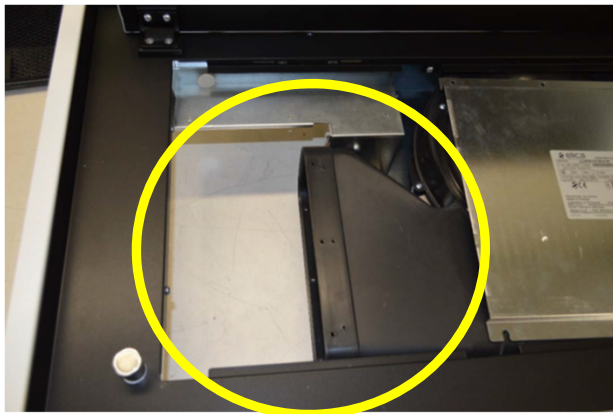
Open panel and remove screws / aprire il pannello e rimuovere le viti

SERVICE MANUAL ILLUSION H16

HOW TO REMOVE FRONT PANEL / COME RIMUOVERE IL PANNELLO FRONTALE



Remove grease filter. Inside the hood there are Service panel for air outlet connection, 12NC and an on-off switch / Rimuovere i filtri grassi. All'interno della cappa ci sono un pannello service per il collegamento uscita aria, 12NC e un interruttore on-off



SERVICE MANUAL ILLUSION H16

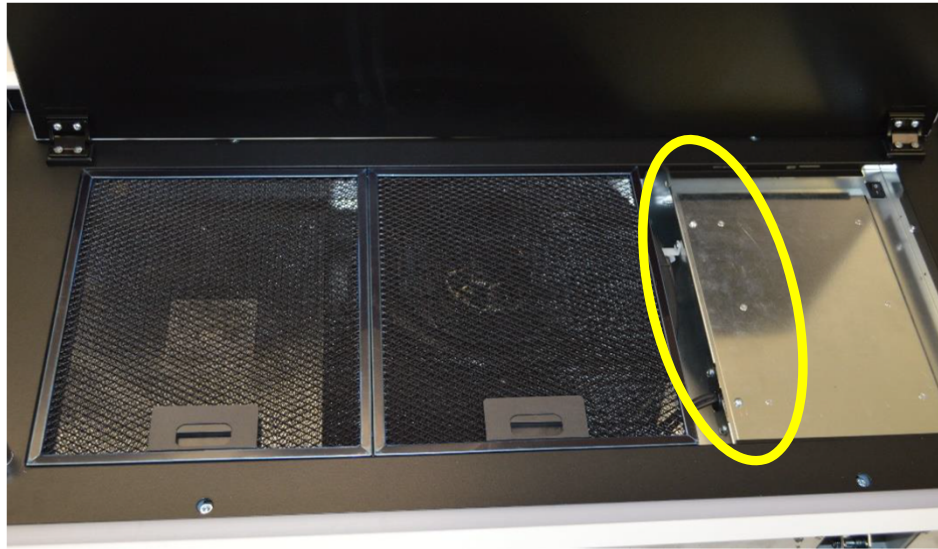
HOW TO REMOVE ILLUMINATION / COME RIMUOVERE L'ILLUMINAZIONE



Lift up the LED bar using a screwdriver. Be carefully don't damage the frame. Disconnect the LED bar connection in order to replace it / Sollevare la barra LED con un cacciavite. Fai attenzione a non danneggiare il telaio. Scollegare la connessione della barra LED per sostituirla.

SERVICE MANUAL ILLUSION H16

HOW TO REMOVE ELECTRONIC DEVICE / COME RIMUOVERE L'ELETTRONICA



Remove grease filters and remove electronic device screws / Rimuovere i filtri grassi e le viti della scatola elettronica

SERVICE MANUAL ILLUSION H16

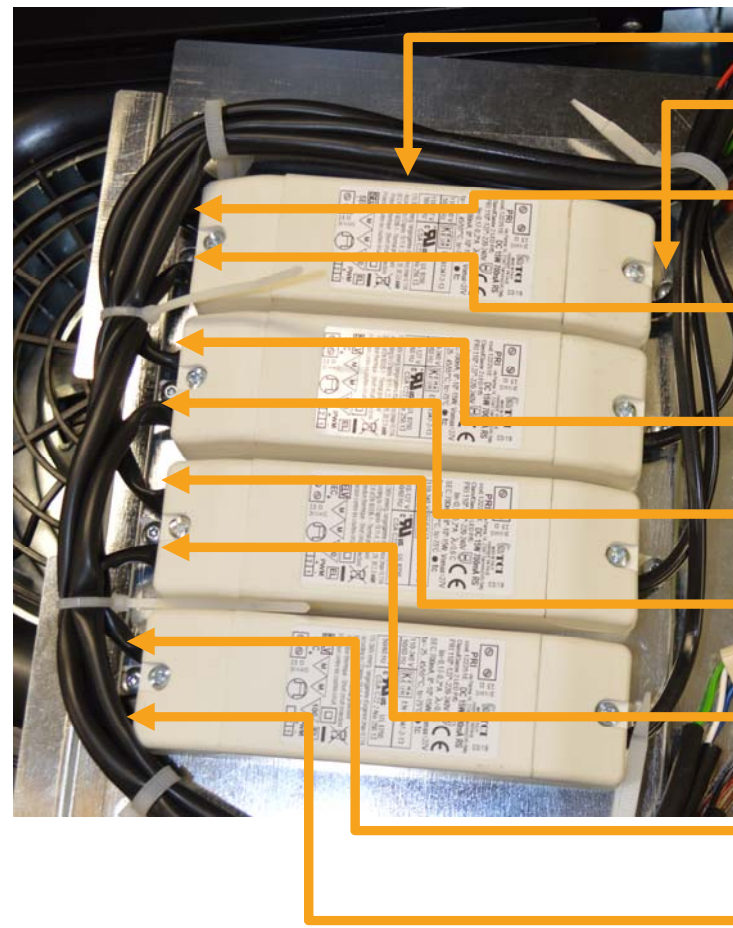
HOW TO REMOVE ELECTRONIC DEVICE / COME RIMUOVERE L'ELETTRONICA



Transformer LED barre

Main board

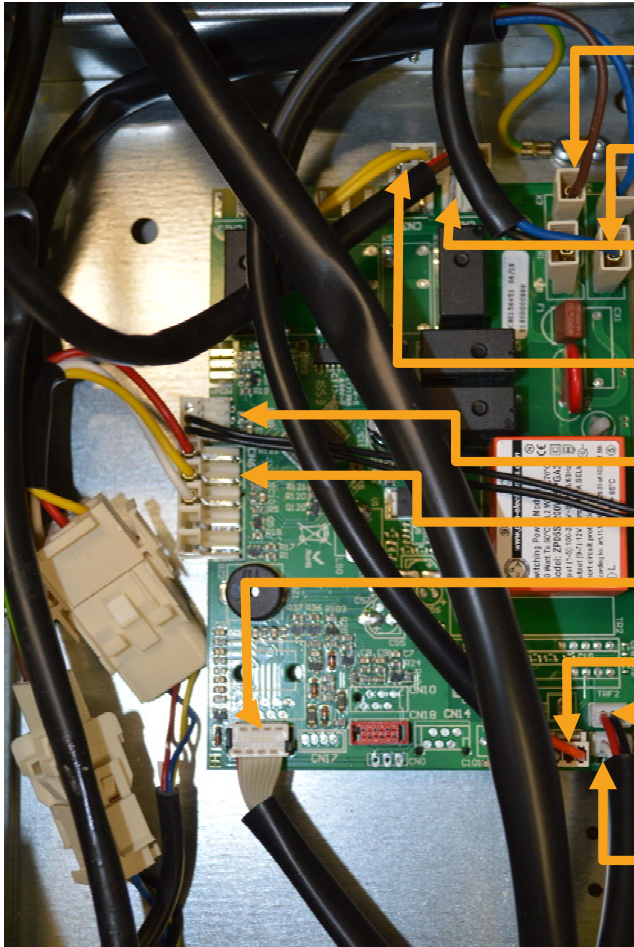
RFI board



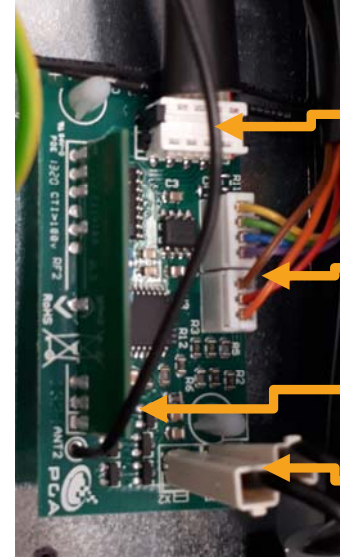
Transformer LED barre
230V Power in-put
12V Power out-put LED barre1 warm light
Signal in-put warm light
12V Power out-put LED barre1 cold light
Signal in-put cold light
12V Power out-put LED barre2 warm light
Signal in-put warm light
12V Power out-put LED barre2 cold light
Signal in-put cold light

SERVICE MANUAL ILLUSION H16

HOW TO REMOVE ELECTRONIC DEVICE / COME RIMUOVERE L'ELETTRONICA



- Power Out-put BLDC board
230V blue/brown
- Power In-put Main board
230V blue/black
- Power Out-put Transformer
230V red/brown
- Power Out-put AUX
illumination 230V
yellow/yellow
- Window Switch
- Speed control BLDC Motor
- Exit UI RFI Board 5V
- Exit Dimmer AUX
Illumination orange/grey
- Out-put signal Dimmer LED
light warm red/black
- Out-put signal Dimmer LED
light cold blue/white



- RFI Board
- Exit UI LED Display 5V
- Entrance UI Remote Control 5V
- Antenna RFI
- Second exit AUX lamps control 5V

IMPORTANT:

- Check that Antenna is present
- Check Firmware code it must be equal or higher than 01800001009 /

IMPORTANTE:

- Controlla quell'antenna è presente
- Controlla il firmware codice deve essere uguale o superiore a 01800001009

SERVICE MANUAL ILLUSION H16

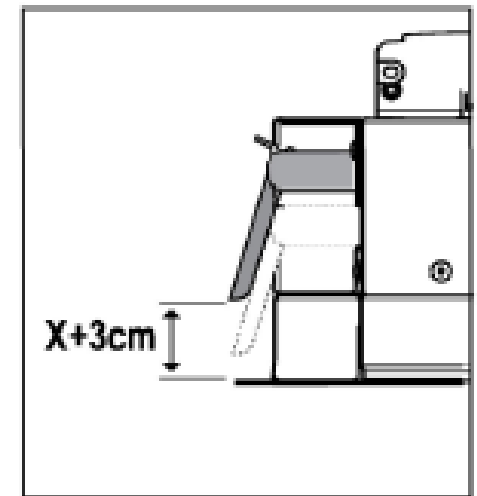
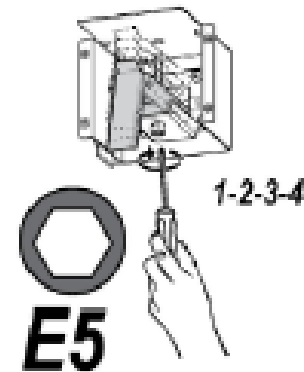
HOW TO REMOVE ILLUMINATION / COME RIMUOVERE L'ILLUMINAZIONE



Lift up the LED bar using a screwdriver. **BE CAREFULLY TO NOT DAMAGE THE FRAME.** Disconnect the LED bar connection in order to replace it / Sollevare la barra LED usando un giravite. Fare attenzione a non danneggiare la cornice. Disconnettere il connettore della barra LED per sostituirla

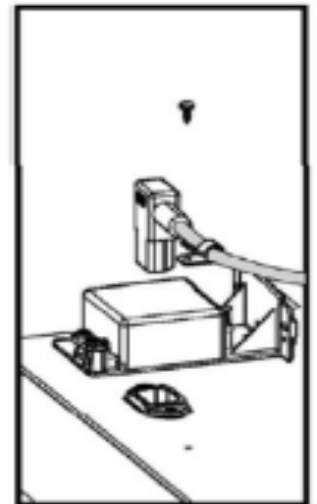
SERVICE MANUAL ILLUSION H16

HOW TO REMOVE THE HOOD FROM THE CEILING / COME RIMUOVERE LA CAPPA DAL SOFFITTO



Open the 4 fixing screws until the unit is in down position (see installation manual) / Allentare le 4 viti di fissaggio (consultare il libretto di installazione)

HOW TO REMOVE THE HOOD FROM THE CEILING / COME RIMUOVERE LA CAPPA DAL SOFFITTO



Lift-up the hood to ceiling and continue to open the 4 fixing screws until they are completely closed. Remove hood from ceiling and disconnect electrical power supply / Sollevare la cappa verso il soffitto utilizzando il meccanismo apposito per il fissaggio. Rimuovere la cappa dal soffitto e scollegare l'alimentazione elettrica.

SERVICE MANUAL ILLUSION H16

HOW TO REMOVE MOTOR / COME RIMUOVERE IL MOTORE

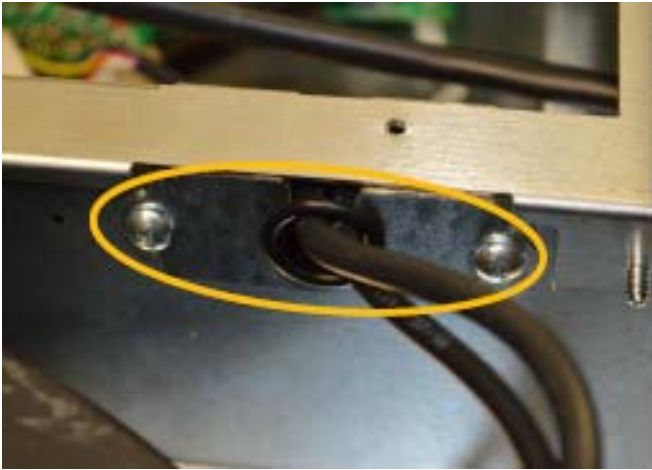


TO REMOVE MOTOR YOU NEED TO REMOVE THE HOOD FROM CEILING / PER RIMUOVERE IL MOTORE è NECESSARIO DISINSTALLARE LA CAPPA DAL SOFFITTO

Unscrew the front panel for easier handling. Open electronic device cover and disconnect motor wire / Rimuovere il pannello frontale per facilitare le operazioni. Aprire la scatola elettronica e disconnettere il connettore

SERVICE MANUAL ILLUSION H16

HOW TO REMOVE MOTOR / COME RIMUOVERE IL MOTORE



Remove inner and outer protection. Remove all inner screws from the painted support panel. Remove all outer screws from the support panel / Rimuovere il passacavo di protezione. Rimuovere le viti interne ed esterne della cornice

SERVICE MANUAL ILLUSION H16

HOW TO REMOVE MOTOR / COME RIMUOVERE IL MOTORE



Remove the panel support (all screws) / Rimuovere il pannello superiore (tutte le viti)

SERVICE MANUAL ILLUSION H16

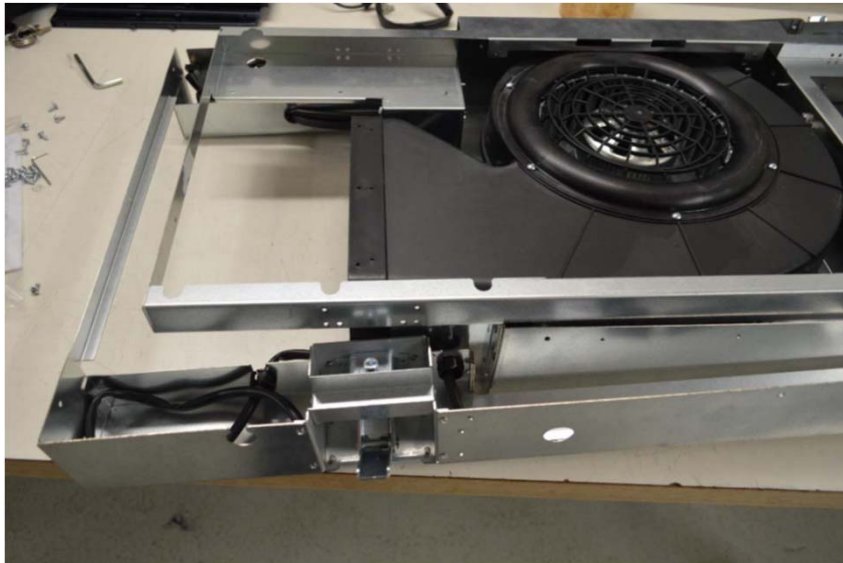
HOW TO REMOVE MOTOR / COME RIMUOVERE IL MOTORE



Remove the screws to unscrew the complete inner frame / Rimuovere le viti per sganciare tutta la cornice interna

SERVICE MANUAL ILLUSION H16

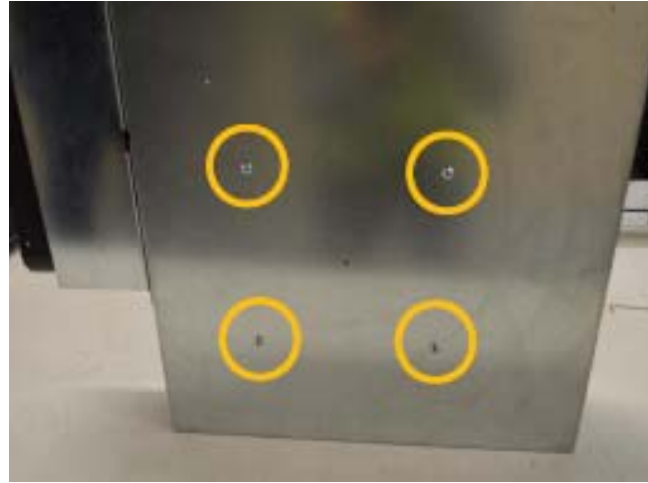
HOW TO REMOVE MOTOR / COME RIMUOVERE IL MOTORE



Lift up the complete inner frame / Solleva tutta la cornice interna

SERVICE MANUAL ILLUSION H16

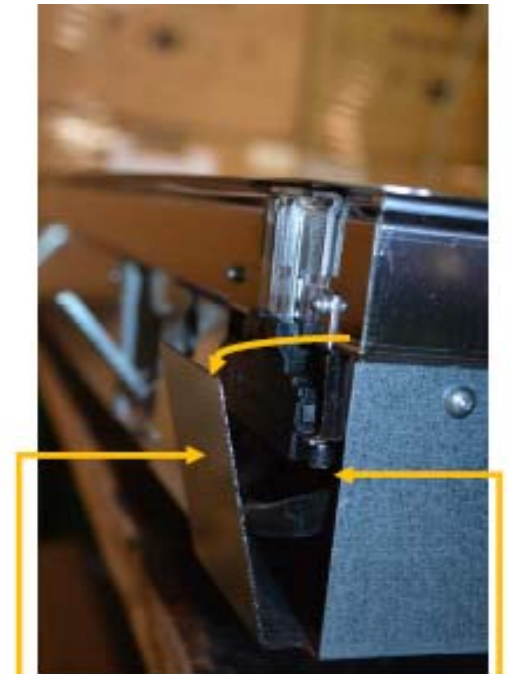
HOW TO REMOVE MOTOR / COME RIMUOVERE IL MOTORE



Unscrew the complete blower from back side. Reassemble the complete cooker hood counter clockwise / Rimuovere le 4 viti posteriori per rimuovere la lamiera dal convogliatore. Per riassembleare il tutto seguire le operazioni effettuate al contrario

SERVICE MANUAL ILLUSION H16

HOW TO REMOVE LED INDICATOR UI / COME RIMUOVERE L'INDICATORE LED UI



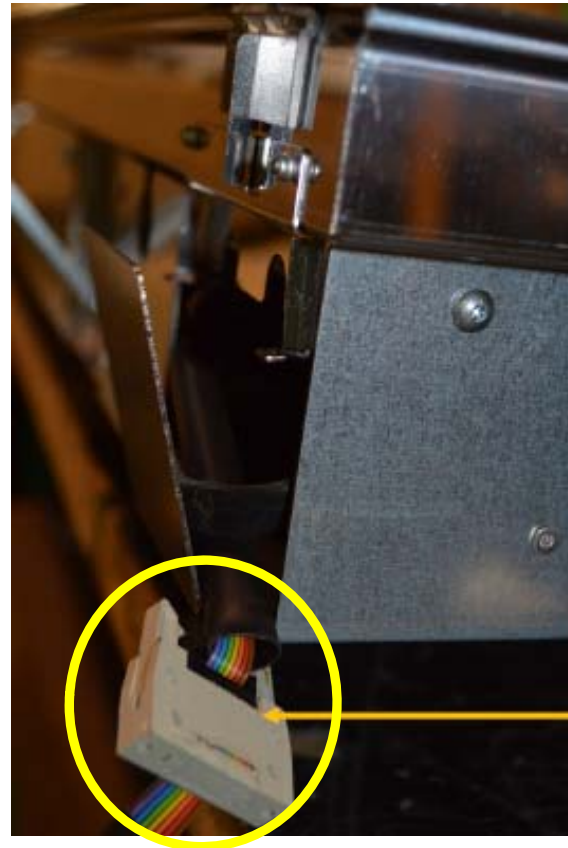
User Interface LED NB. To replace the LED indicator the hood must be removed from ceiling / UI indicatore LED. NB. Per sostituire l'indicatore LED è necessario rimuovere la cappa dal soffitto

Open the metal protection by bending it slightly, after replacement reclose it. Unscrew the 2 fixing screws and remove the LED indicator.

SERVICE MANUAL ILLUSION H16

HOW TO REMOVE LED INDICATOR UI / COME RIMUOVERE L'INDICATORE LED UI

Disconnect LED indicator wiring /
Disconnettere il connettore
dell'indicatore LED





elica

MetLife